



# College of the Desert

## Facilities Master Plan

10 . 15 . 18

# EMP PROJECTED GROWTH

GROWTH NEEDS TO 2030

10 . 15 . 18

	<u>LAB</u>	<u>LECTURE</u>
CIS	2	
Communication		1
Foreign Language		1
English		6
ESL (NC)		3
Health Sciences	1	
Mathematics		7
Biology	2	
Chemistry	1	
Music	1	
History		1
Psychology		2
<b>TOTAL</b>	<b>7 LAB</b>	<b>21 LECTURE</b>



- Support/ Provide Additional Space for:
  - Theater/ Performing Arts (approx. 400 seat)
  - Student Union
  - University Center
  - Visual Arts
- Repurpose of existing buildings/ historic core
- Consolidate instructional uses into larger buildings
- Increase student parking and improve distribution
- Decrease pedestrian/ vehicular conflicts
- Replace aging athletics fields and provide support facilities
- Establishment of “Enterprise Zone” off Fred Waring Drive



## 1. Allied Health

- 2 Nursing Labs
- Simulation Center
- Centralized Storage
- Debriefing Rooms
- Old Nursing Building is not functional
- Centralize Allied Health

## 2. Public Safety

- Many adjunct faculty members – office space required
- Storage

## 3. Early Childhood Education / CDC

- Need additional classroom for infants
- Overall renovation
- Improve parking / drop off
- Conference room & offices

## 4. Agriculture

- Storage (indoor & secure)
- Maintenance shop with lift

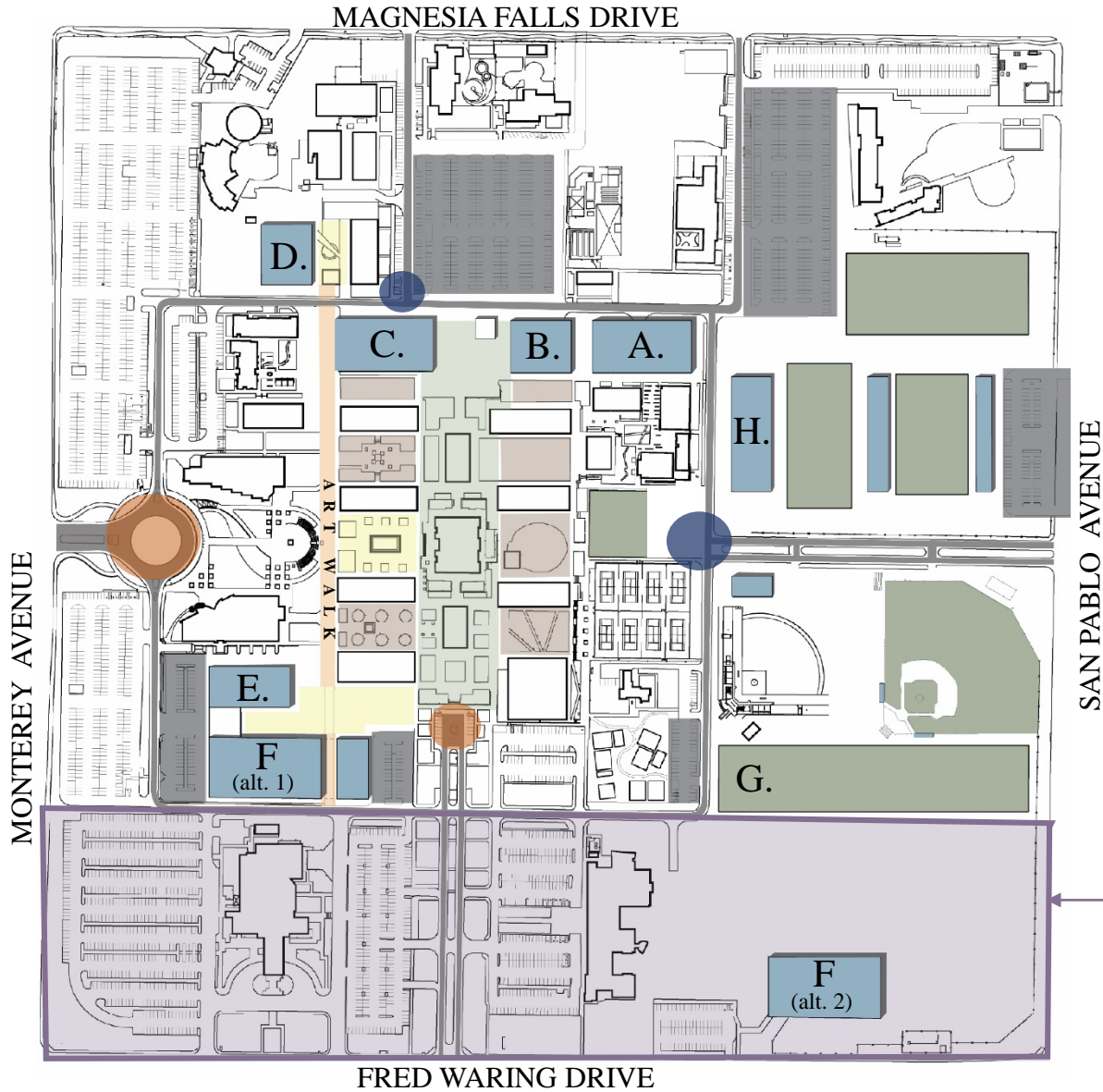


# PROPOSED PROJECTS

10.15.18

**Key:**

- New Buildings
- New Athletics
- New Parking
- Primary Nodes
- Historic Green Core
- Other Outdoor Space
- Existing Entry Drop-off
- Proposed Entry Drop-off



**New:**

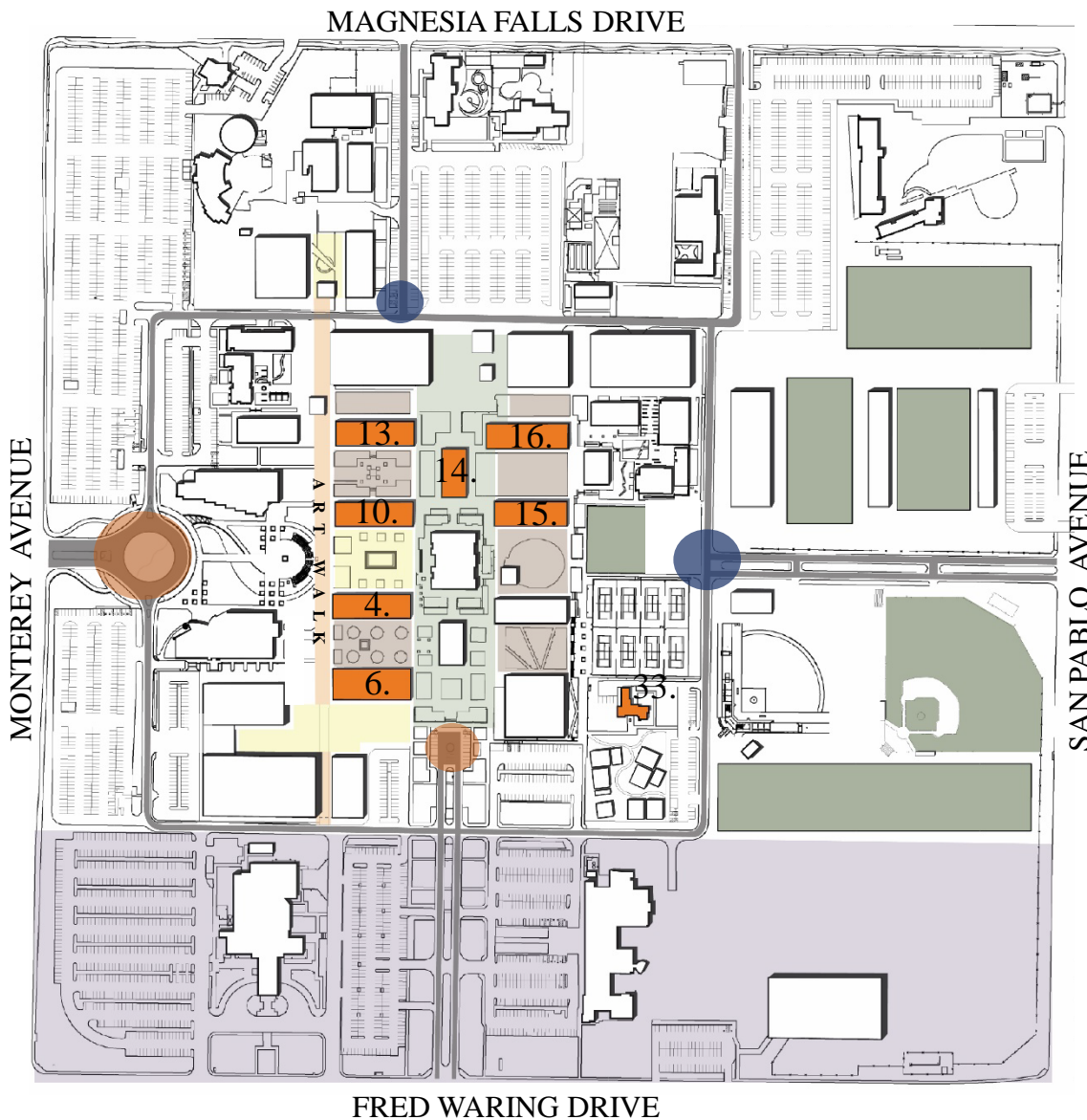
Building Letter	Proposed Use
A	Academic Building *(Future Determined)
B	Academic Building *(Future Determined)
C	Performing Arts *(pending state funding)
D	Visual Arts
E	Student Union
F	University Center
G	Golf Skills Area
H	Athletic Fields & Support Facilities

← Opportunity for Student Housing in Enterprise Zone



**Key:**

- Repurposed Buildings
- New Athletics
- New Parking
- Primary Nodes
- Historic Green Core
- Other Outdoor Space
- Existing Entry Drop-off
- Proposed Entry Drop-off



## Secondary Effects:

### Historic Core:

Building #	Current Use	Age	Renovated
4	Administration	54	-
6	Dining Hall	55	2011
10	Liberal Arts	55	2014
13	Business	47	2010
14	Carol Meier Hall	55	-
15	Science	55	2001
16	Social Science	16	-
33	Foundation House	-	-

### Possible Uses:

- Administrative Services
- Business Office
- Human Resources
- Bookstore
- Multi Purpose Space
- Storage
- Career Center
- Maker Space
- Conference Rooms
- Offices
- Adult Education
- ESL
- Classrooms
- Lecture Hall
- Kinesiology
- Athletics Offices
- Faculty Offices
- Event Storage
- Allied Health
- Public Safety Offices
- Early Childhood Education
- Agriculture Storage
- Foundation

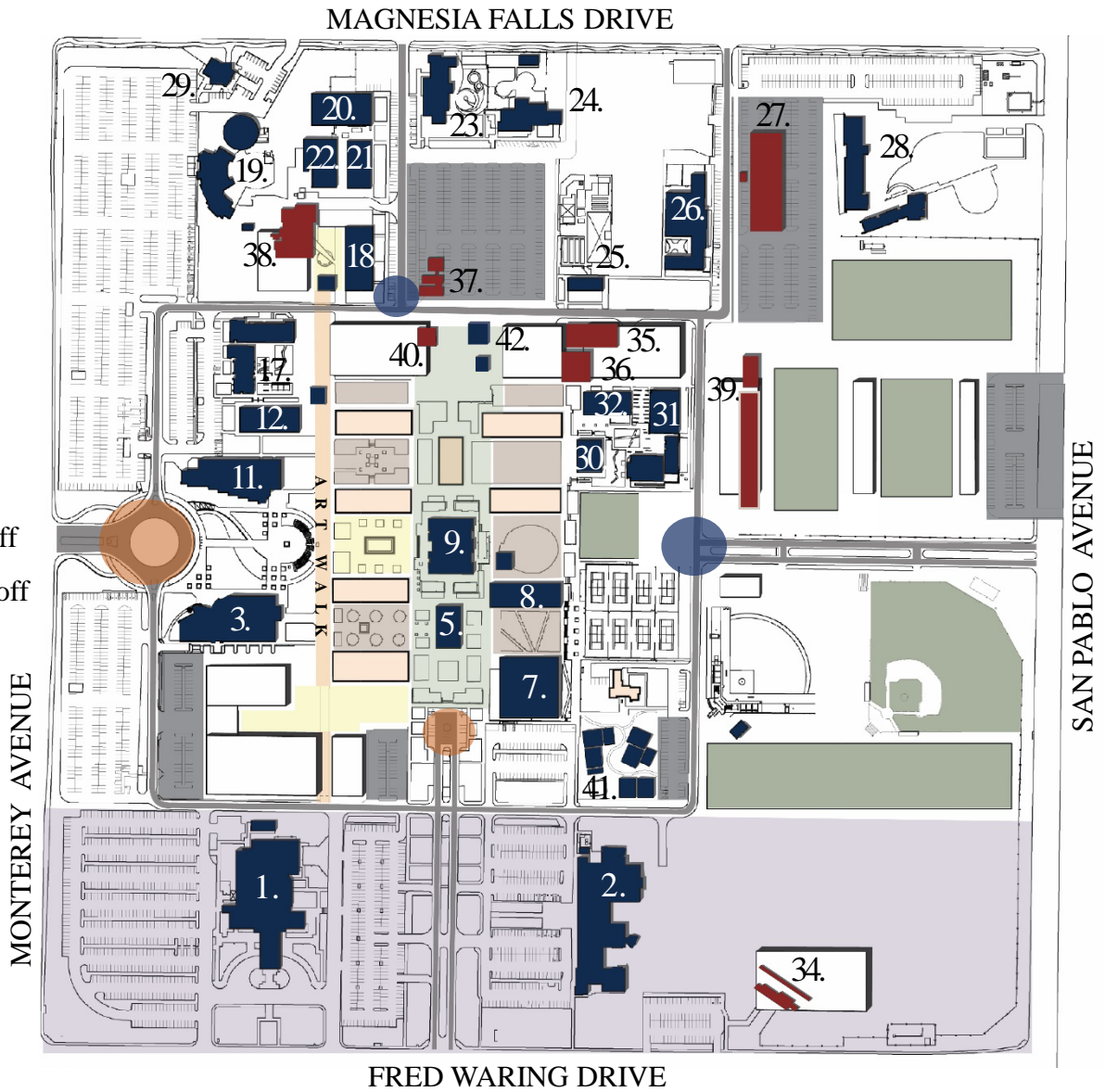


# EXISTING TO REMAIN / DEMO

10 . 15 . 18

**Key:**

- Buildings to Demo
- Buildings to Remain
- Repurposed Buildings
- New Athletics
- New Parking
- Primary Nodes
- Historic Green Core
- Other Outdoor Space
- Existing Entry Drop-off
- Proposed Entry Drop-off



**Buildings to Demo:**

Building #	Building Name
27	Diesel Mechanics
34	Golf Skills Center
35	Stagecraft
36	Theater Too

Building #	Building Name
37	Bond Offices
38	Marks Music Building
39	Stadium/Training/Weight Room
40	North Annex

**Existing to Remain:**

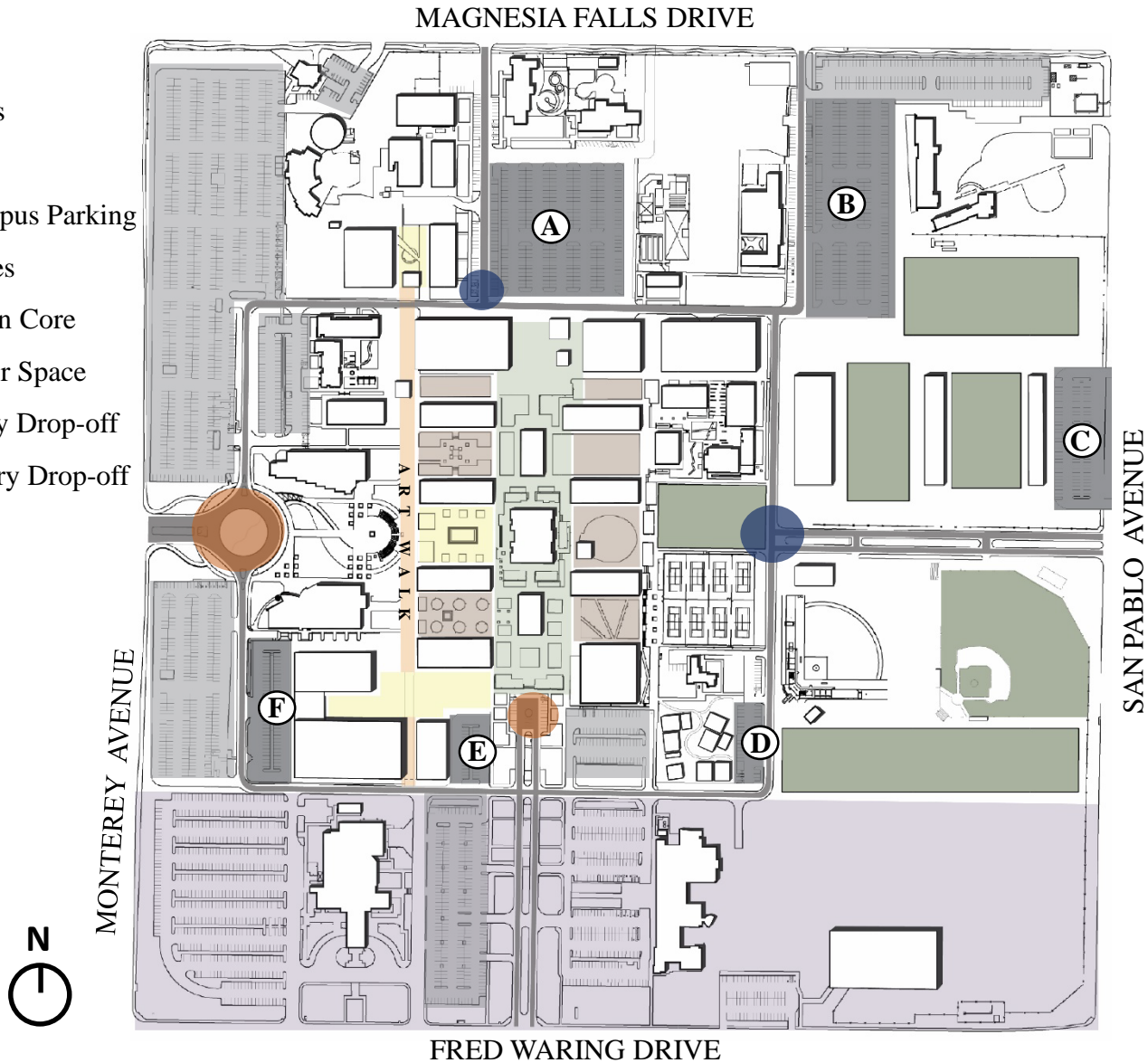
Building #	Building Name
1	McCallum Theater
2	Public Library
3	Cravens SS Center
5	Building C
7	Gymnasium
8	Kinesiology
9	HILB Library
11	Communication
12	Nursing
17	Nursing Center
18	Art
19	Central Plant
20-21	M & O

Building #	Building Name
22	Warehouse
23	Early Childhood Education
24	Child Development Center
25	Agricultural Science
26	Applied Sciences
28	Public Safety Academy
29	Alumni Center
30	Math
31	MSTC
32	Academic Skills Center
41	The Village
42	North East Annex



# PARKING

- Key:**
- New Athletics
  - New Parking
  - Existing Campus Parking
  - Primary Nodes
  - Historic Green Core
  - Other Outdoor Space
  - Existing Entry Drop-off
  - Proposed Entry Drop-off



	Parking Solution	# Stalls	Current Enrollment (9,822 Students)	Projected Enrollment 2030 (12,047 Students)
<b>TODAY</b>	Current Parking	2,629	3.74 : 1	4.58 : 1
	No Parking on Fred Waring Drive	2,385	4.11 : 1	5.05 : 1
<b>FMP PLAN</b>	Surface Parking	2,767	-	4.35 : 1
	No Parking on Fred Waring Drive	2,523	-	4.77 : 1

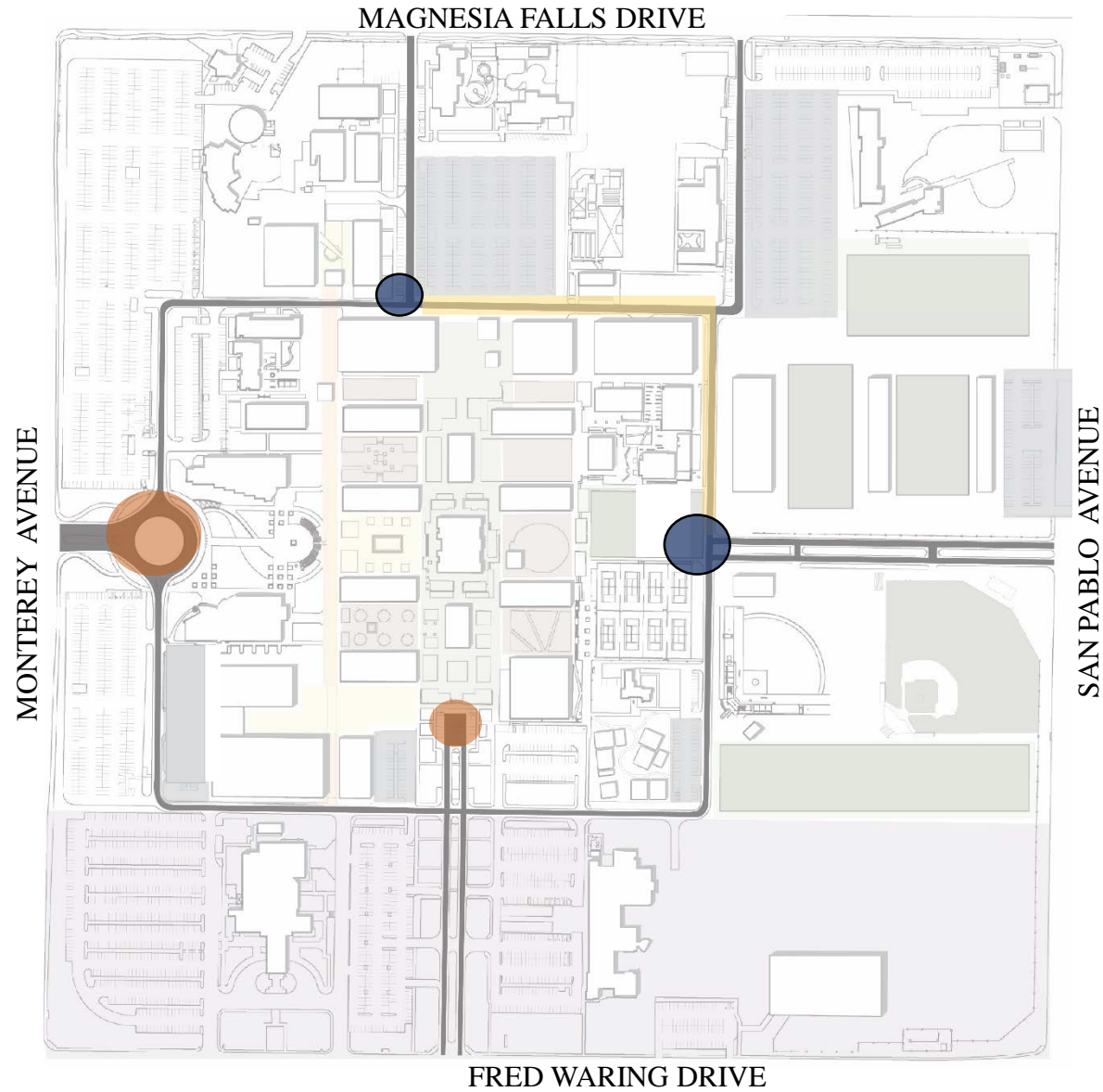
Ⓐ New Parking Lot





**Key:**

- New Athletics
- New Parking
- Primary Nodes
- Historic Green Core
- Other Outdoor Space
- Existing Entry Drop-off
- Proposed Entry Drop-off
- Temporary Pedestrian Walk



## Temporary Pedestrian Walk:

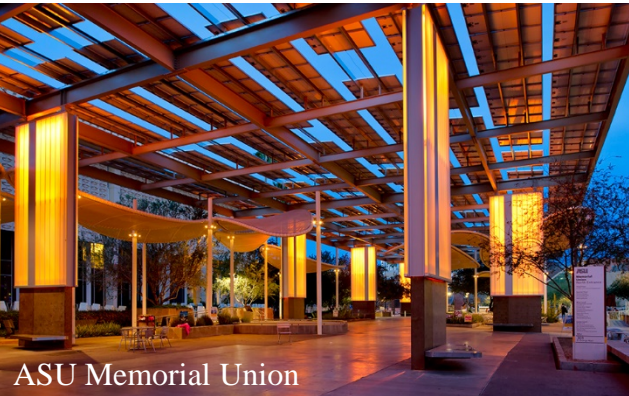
- Close down Northeast corner to vehicular access during large events
- Provide direct pedestrian access from core of campus to Agriculture, Applied Sciences, Public Safety Academy, and Athletic Facilities



# INSPIRATIONAL IMAGERY

10.15.18

## STUDENT VILLAGE & CAMPUS CORE



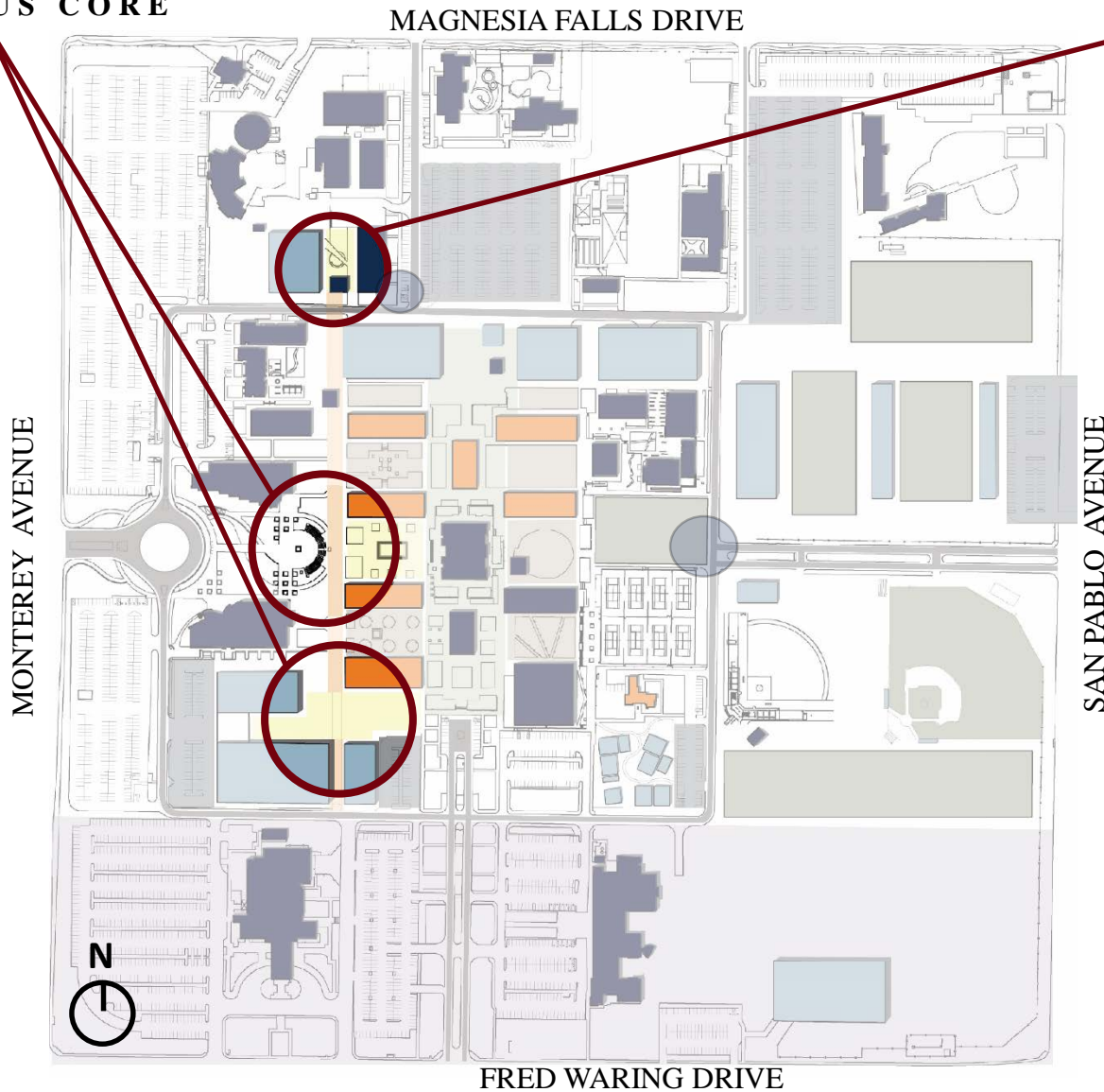
ASU Memorial Union



ASU Memorial Union



ASU Memorial Union



## ARTS PLAZA



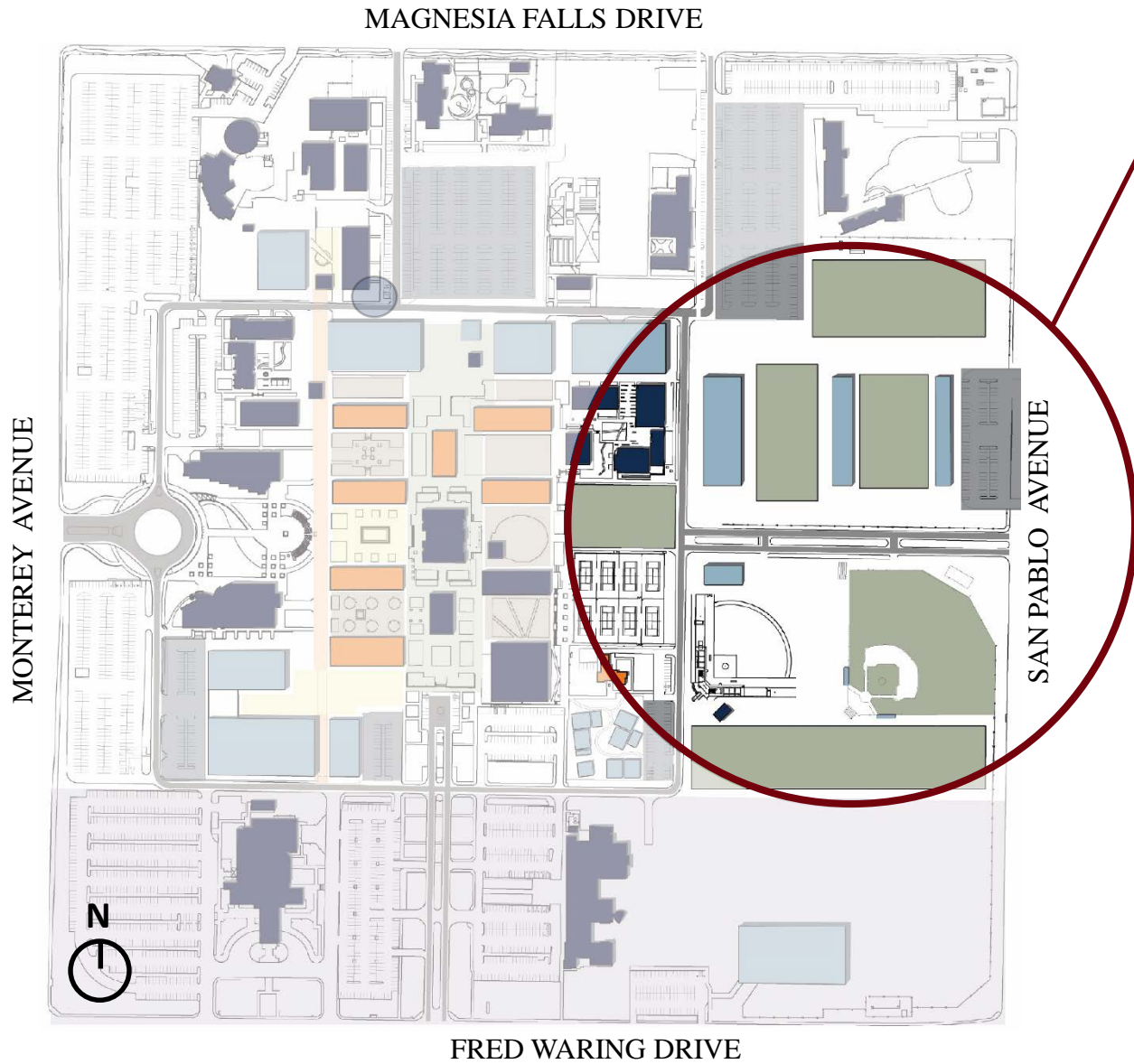
ASU Bookstore



Contemporary Art Museum – Raleigh

# ATHLETIC FIELDS AND SUPPORT FACILITIES

10.15.18



## NEW ATHLETICS FACILITIES

Venice High School



Venice High School



# MASTER PLAN

10.15.18

**Key:**

- New Athletics
- New Parking
- Primary Nodes
- Historic Green Core
- Other Outdoor Space
- Existing Entry Drop-off
- Proposed Entry Drop-off
- New Buildings
- Repurposed Building
- Building to Remain



**New:**

Building Letter	Proposed Use
A	Academic Building *(TBD)
B	Academic Building *(TBD)
C	Performing Arts
D	Visual Arts

Building Letter	Proposed Use
E	Student Union
F	University Center
G	Golf Skills Area
H	Athletic Fields & Support Facilities

**Repurposed:**

Building #	Proposed Use
4	TBD
6	TBD
10	TBD
13	TBD

Building #	Proposed Use
14	TBD
15	TBD
16	TBD
33	TBD

**Existing to Remain:**

Building #	Building Name
1	McCallum Theater
2	Public Library
3	Cravens SS Center
5	Building C
7	Gymnasium
8	Kinesiology
9	HILB Library
11	Communication
12	Nursing
17	Nursing Center
18	Art
19	Central Plant
20-21	M & O

Building #	Building Name
22	Warehouse
23	Early Childhood Education
24	Child Development Center
25	Agricultural Science
26	Applied Sciences
28	Public Safety Academy
29	Alumni Center
30	Math
31	MSTC
32	Academic Skills Center
41	The Village
42	North East Annex





### Other Potential Site Acquisition

- CDC
- Parking

# MECCA FUTURE PLAN

10.15.18



## Key:

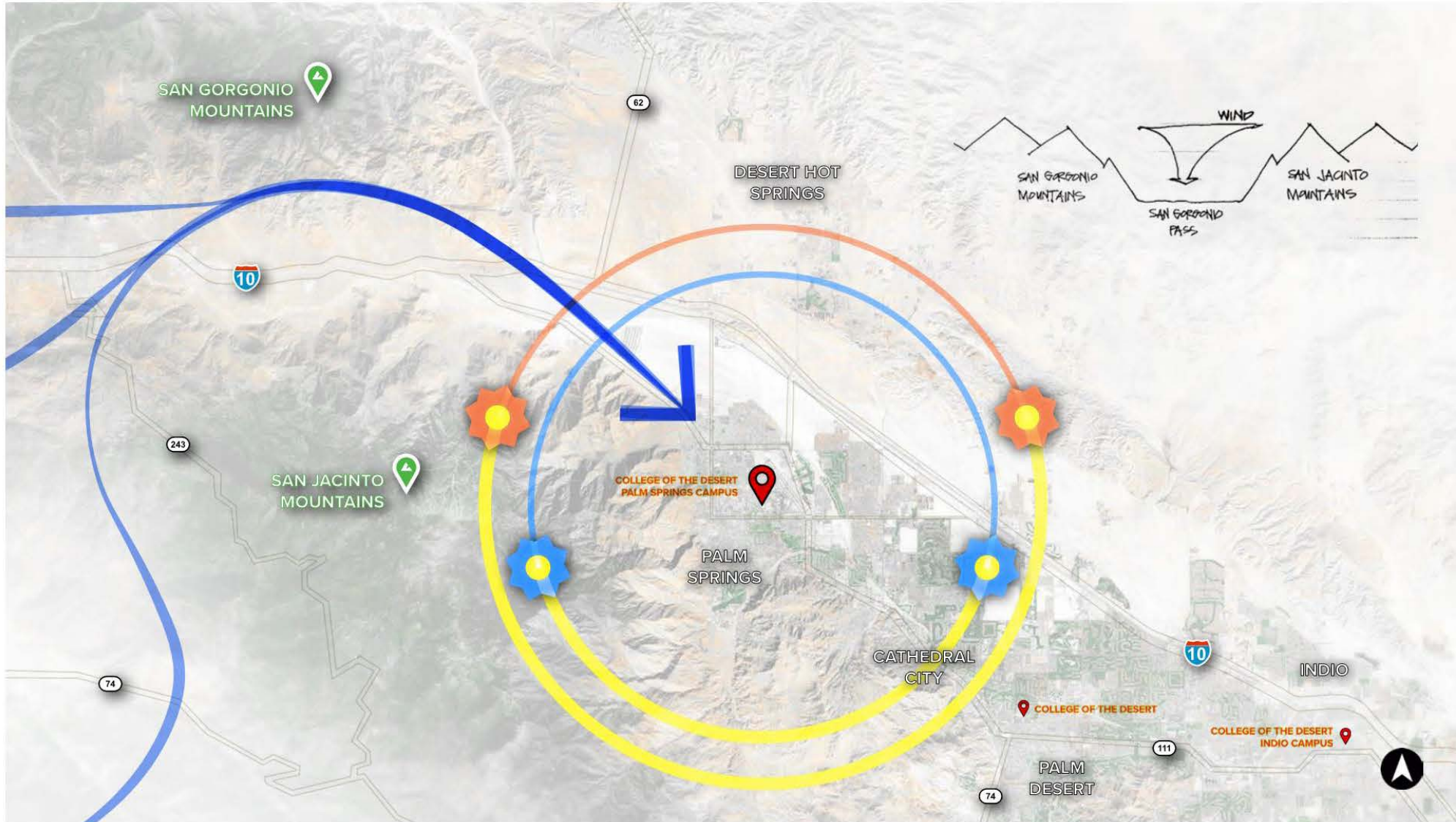
- 2 Mobile Lab Stations
- Outdoor Lab
- Greenhouses/ Outdoor Agriculture/Horticulture Labs
- Parking Stalls (approx. 400)
- Existing Buildings
- Potential Planetarium/Observatory Resources

- Planned expansion of the Observatory
- Addition of Planetarium
- Open Area/Amphitheater/Stargazing
  - Way to engage the community



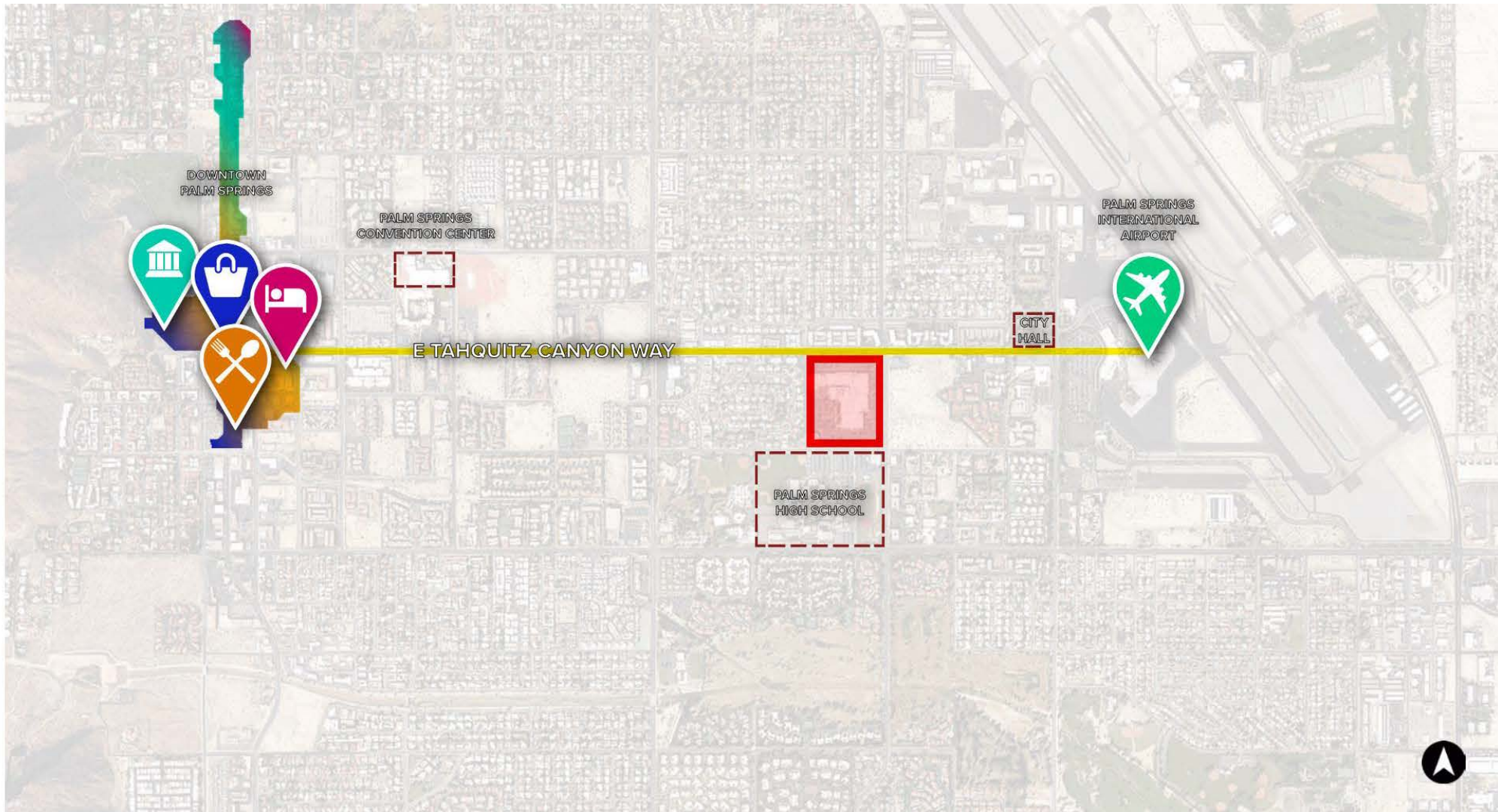
# PALM SPRINGS CAMPUS – REGIONAL CONTEXT

10.15.18



# PALM SPRINGS CAMPUS – COMMUNITY PROXIMITY

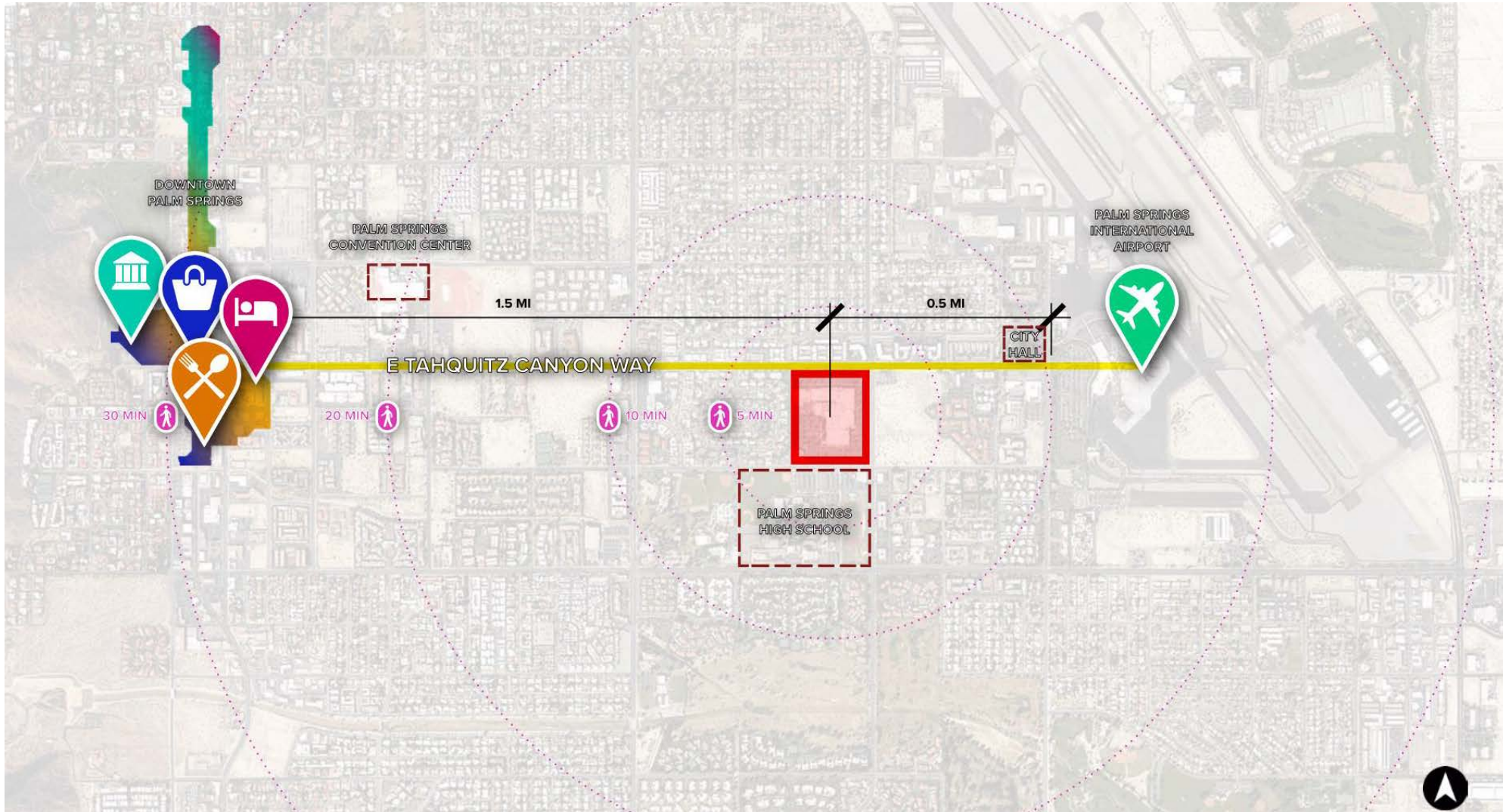
10 . 15 . 18





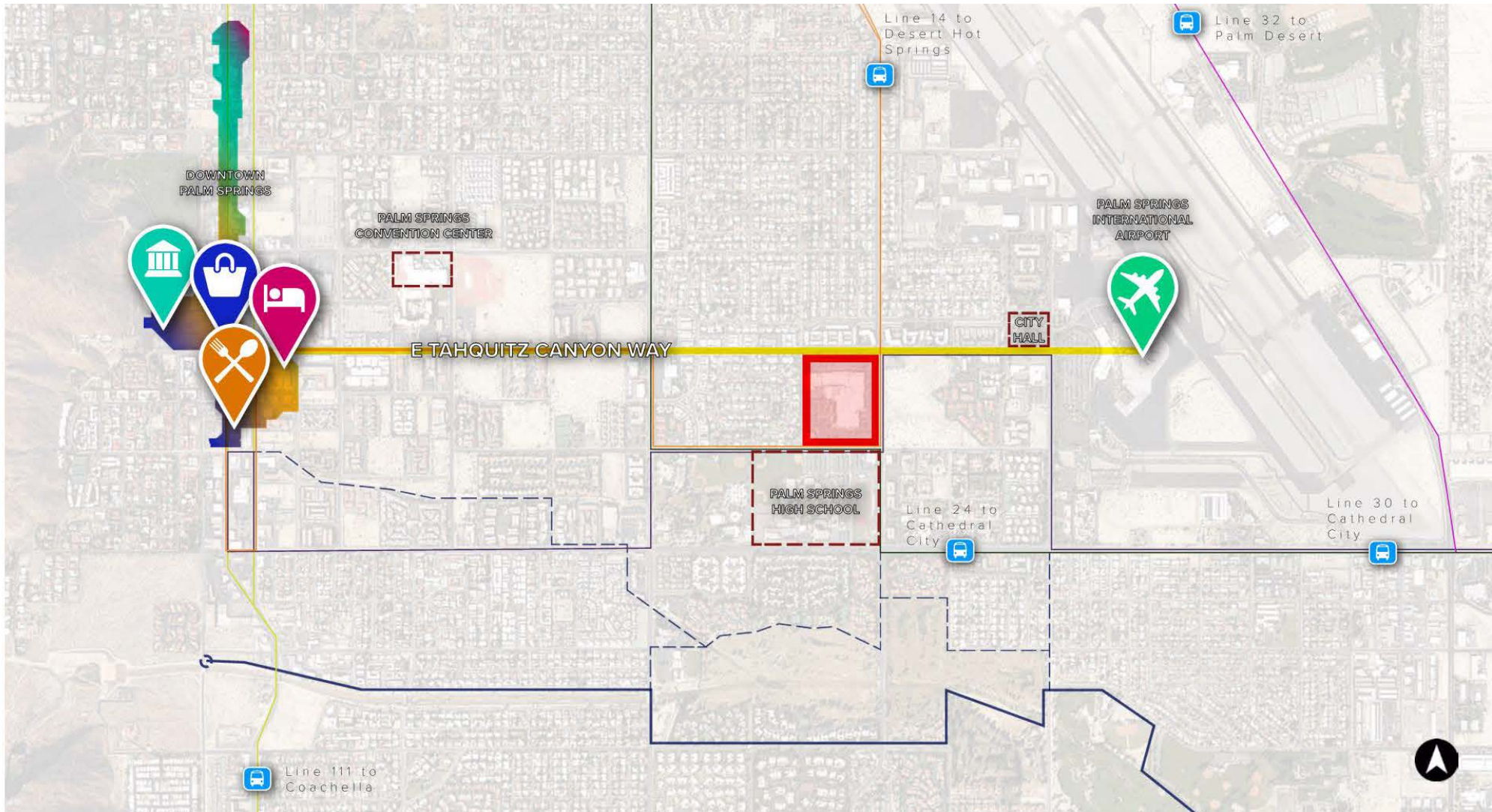
# PALM SPRINGS CAMPUS – WALKING DISTANCE

10 . 15 . 18



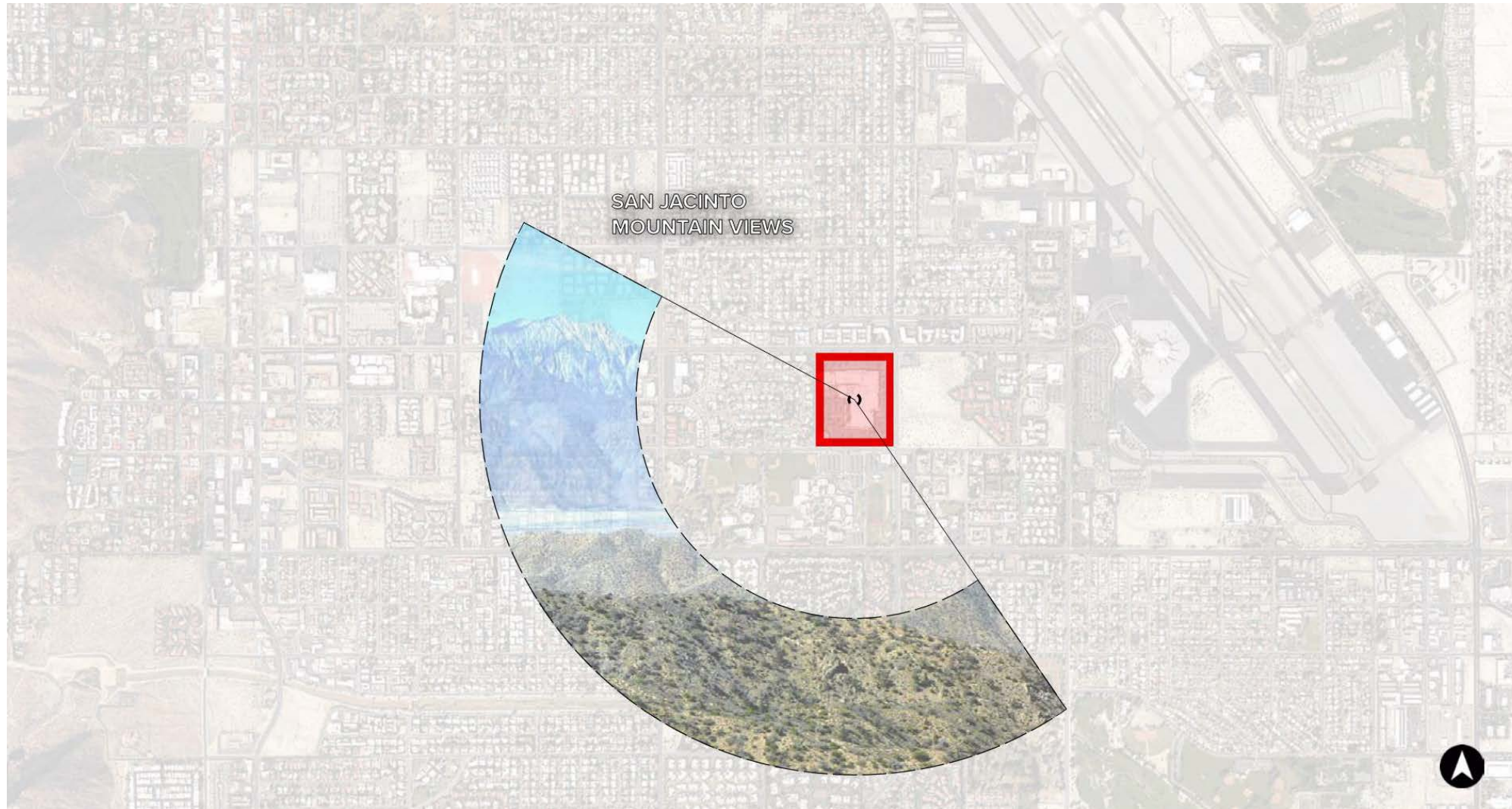
# PALM SPRINGS CAMPUS – PUBLIC TRANSPORTATION

10.15.18



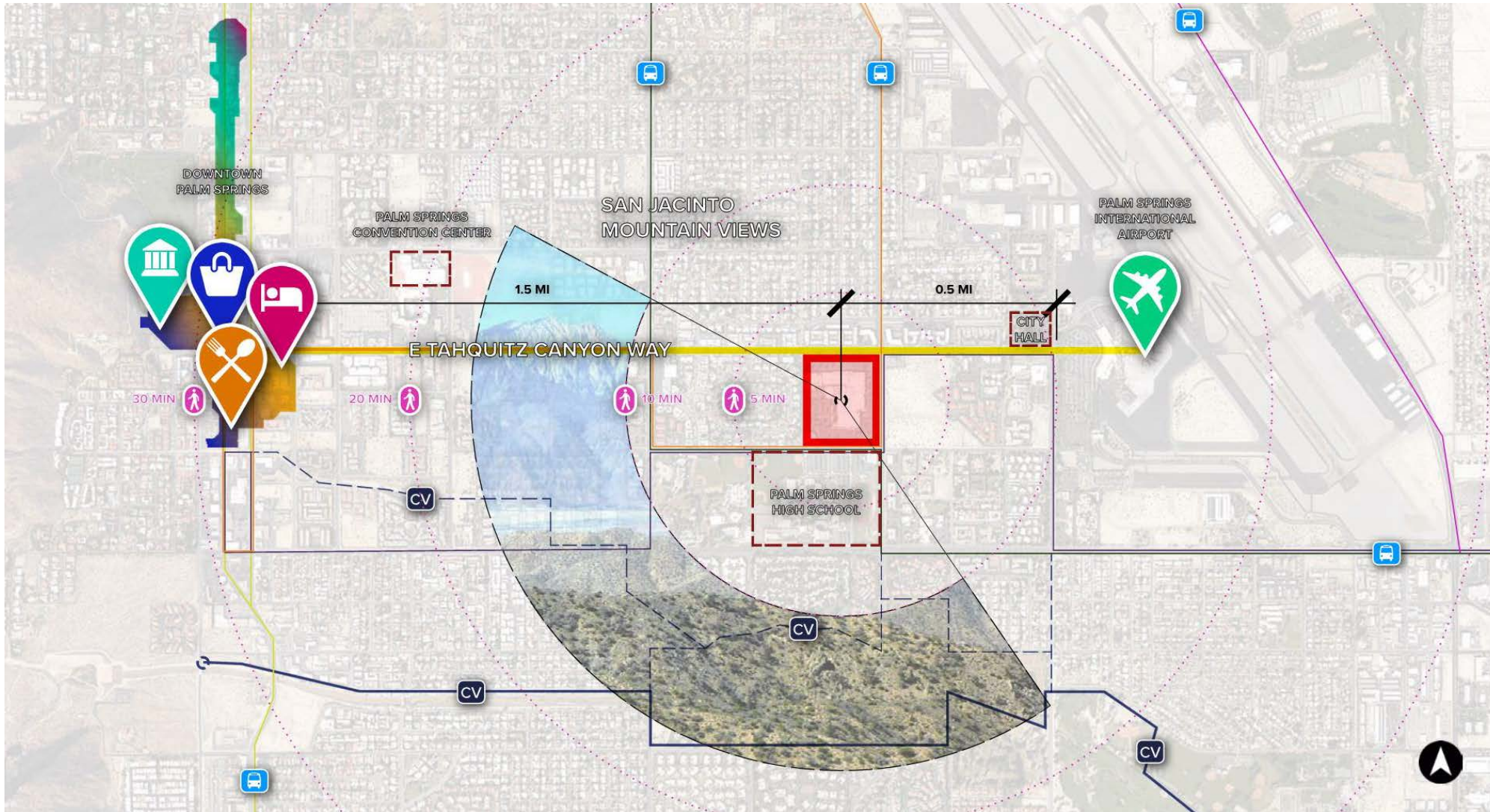
# PALM SPRINGS CAMPUS – PRIMARY VIEWS

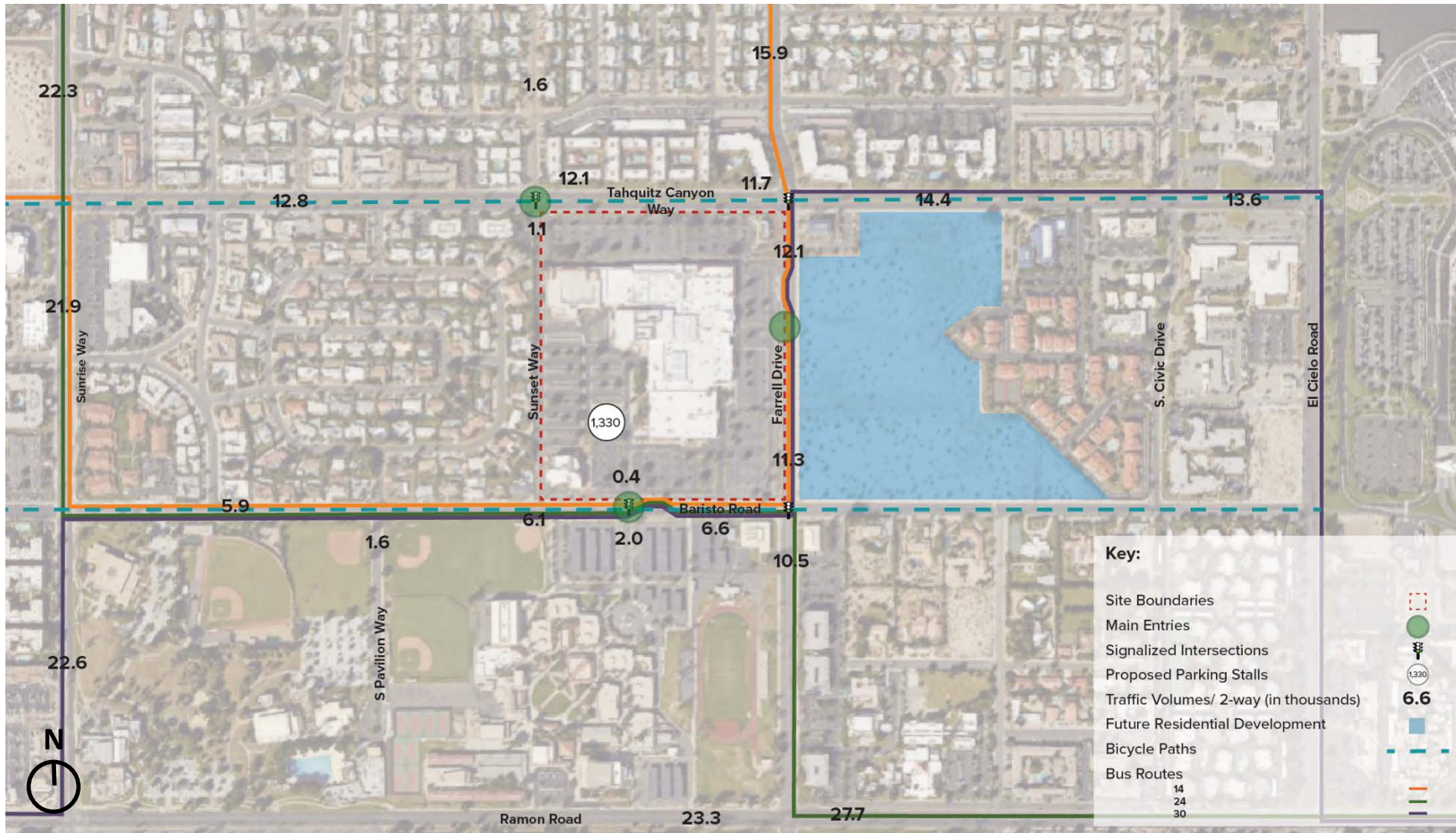
10.15.18



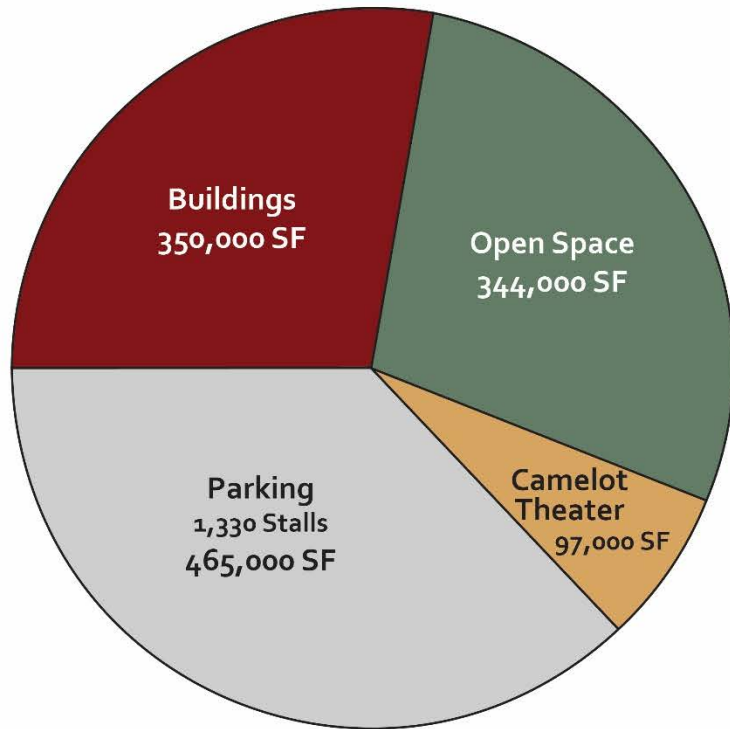
# PALM SPRINGS CAMPUS – OVERALL SITE ANALYSIS

10.15.18

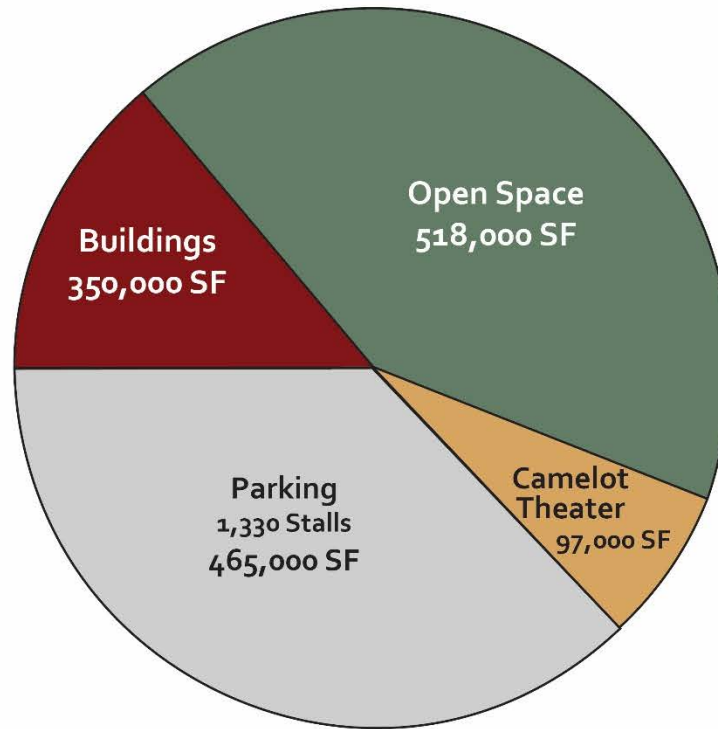




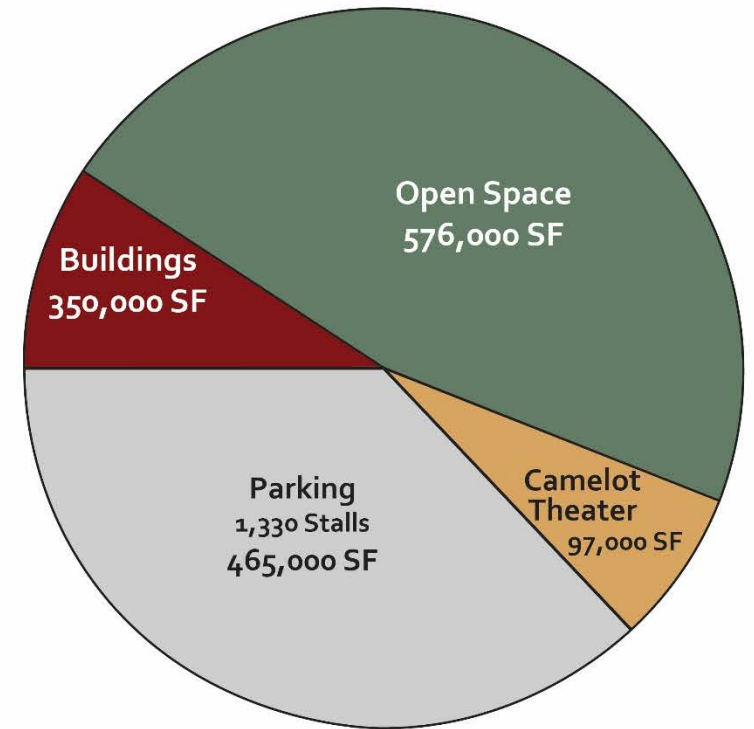
### 1 - STORY



### 2 - STORIES



### 3 - STORIES



# PALM SPRINGS CAMPUS – PROGRAM PILLARS

10 . 15 . 18

## FILM & DIGITAL MEDIA

### Film/ Television

- Recording Studios
- Theater Expo.Space (Screening Room)
- Sound & Lighting Stage/ Lab
- Studio Space (Makerspace)
- Small Meeting/Classroom
- Editing Rooms
- Storage Space

### Journalism

- Computer Labs

### Photography

- Wet Lab
- Dry Lab
- Additional Computer Labs

### Radio

- Recording Studios
- Office Space

### Graphics

- Computer Labs (multi-purpose media labs)

### Marketing

- Classrooms
- Computer Labs

## CULINARY & HOSPITALITY

- Demo/ Lecture Space

### Food Growth

- Gardens/Growing Area
- Hydroponics/Horticulture

### Food Borne Illness

- Classrooms

### Culinary Labs

- Baking Lab
- Dining Lab
- Beverage Lab
- Production Kitchen
- Skills Labs
- Asian (Cuisine)
- Outdoor Eating Lab
- Small "exempt" kitchen (non-hood)

### Department Store/Kiosk

(student created product/student ran)

### Catering

- Storage Space
- Banquet Hall
- Catering Kitchen

### Food Truck

- Cooking Lab
- Outdoor Lab w/ gathering space
- Docking Station

### Community Outreach

### Hotel Management

- Hotel
- Simulation Rooms

### Business

- Classrooms
- Computer Labs

### Spa Management

- Esthetician Labs
- Massage Labs
- Classrooms

### Conferencing Center

## HEALTH & WELLNESS

### Diabetes Education

- Food/Nutrition Labs
- Classrooms

### Mental Health

- Office Space
- Patient Rooms
- Meeting Space

### Physical & Occupational Therapy

- Labs
- Classrooms

### Kinesiology

- Gym/Workout Machine Rooms
- Private Rooms/Offices
- Therapy Pools
- Large Movement Rooms

### In Home Aid

- Simulation Labs
- Debriefing Rooms
- Storage Space for Equipment

### Geriatrics

- Simulation Labs
- Senior Living Residential

### Entrepreneurship

### Public Health

- Community Gathering
- Classrooms

## SUSTAINABLE ENERGIES

### Makerspaces

### Mobile Training Labs (Similar to Mecca)

### Learn By Doing

Use campus facilities as Labs

### Solar Panels

### Wind Turbines

### Lab Spaces

### Possible Program:

### HVAC

### Refrigeration

### Commercial Equipment & Repair

### Electrical/Electronic Systems

### Structural Building Repair

### Plumbing Applications

### Tiling, Flooring, & General Repair

### Solar Equipment Maintenance

### Sustainable Building Technologies:

- General
- Blue Print Reading
- Math for Technicians

## OTHER SPACES

Administration   Library   General Classrooms   Support/ Student Services   Campus Food Service   Student Union/Hangout Space   General Labs   Contract Ed. / PACE





**QUESTIONS**