

**DESERT COMMUNITY COLLEGE DISTRICT
REGULAR BOARD MEETING
CRAVENS MULTI-PURPOSE ROOM
FRIDAY, AUGUST 19, 2011
MINUTES**

I. CALL TO ORDER – PLEDGE OF ALLEGIANCE

Vice-Chair Stefan called the meeting to order at 9:30 a.m. and asked Trustee Michael O'Neill to lead the Pledge of Allegiance.

II. ROLL CALL

Present: Becky Broughton, John Marman, Michael O'Neill, Bonnie Stefan, Aaron Bonner
Present via teleconference: Charles Hayden

III. CONFIRMATION OF AGENDA

Motion to approve by John Marman, second by Michael O'Neill.

Discussion: None

Roll call vote: 6 ayes, 0 nay, 0 absent, 0 abstain

Yes: Becky Broughton, John Marman, Charles Hayden, Michael O'Neill, Bonnie Stefan,
Aaron Bonner

No: None

Final Resolution: Motion carried.

IV. PUBLIC COMMENTS

Aries Jaramillo, former Student Trustee, read the proclamation for National Hispanic Heritage month.

There were no requests to address the Board.

V. APPROVE THE MINUTES

Trustee Marman asked that a sentence be removed as it was inaccurate on page 14: "Going from 5-3 days is the result of our auditors, who said we were running about an \$800,000 deficit and must reduce the receivables." There were no further corrections to the minutes of the regular meeting of July 21, 2011 and they stand approved as amended. Trustees Broughton & O'Neill liked the format of the minutes and expressed their appreciation of a job well done.

VI. REPORTS

A. GOVERNING BOARD

Student Trustee Bonner acknowledged the students in the audience and thanked them for attending. He reported on his activities and/or attended:

- Attended the Community College League of California's student trustee workshop and thanked the CCLC for the opportunity. The workshop featured team building exercises, the difference between the ASCOD President's role vs the student trustee, how to have a balance between representing the students but be mindful of decisions that will impact the district
- Attended the ASCOD retreat - looks forward to an exciting new year. It is his hope to encourage more student participation and to continue the leadership roles of the previous ASCOD representatives. ASCOD's commitment to student success remains the same.

Trustee Broughton reported on her activities and/or attended:

- She is looking forward to working with the student trustee
- Attended the demolition of the old bus station in Indio. She said the city is quite excited about COD locating there and they are going out of their way to welcome COD.
- 2+2 meeting with Indio City Council
- East Valley friends and alumni - focusing on college vocational night
- Along with Trustee O'Neill, met with Dr. Deas regarding the contract information brought to the board. The new process is easier and more accessible.
- She is looking forward to FLEX and a great year

Trustee Marman reported on his activities and/or attended:

- Meetings on 911 ceremonies in park
- Met with President Patton and student services personnel regarding student payment deadlines and other information. He appreciated the time spent with him.

Trustee O'Neill reported on his activities and/or attended:

- Along with Trustee Broughton, met with Dr. Deas regarding board policy on contracts. This was the first task force of the Board and he felt it was very effective and a great deal was accomplished.
- Health and welfare committee meeting. He offered his congratulations to everyone that participated. He was impressed with the work they had done and maintained what we have with a few changes. He thanked Robert Blizinski and Wade Ellis for their leadership.
- Attended the agenda review meeting. He likes the new format and both he and the Vice Chair agreed to pilot it this meeting. He thought it more functional and a big improvement
- He saw a Channel 3 news piece about our tech program and commented on the outstanding job that was done and the enthusiasm of the instructor. It was very motivating and great public relations. He asked if it was possible to get a copy of the clip.

Trustee Hayden is at Red Rock Community College. They were kind enough to allow him to use a room there in order to teleconference to the meeting. He introduced Bill Dial, Director of

Human Resources, who gave an overview of Red Rock Community College. Mr. Hayden thanked Red Rock for their hospitality.

Trustee Stefan reported on her activities and/or attended:

- Attended the 2 + 2 meeting with Indio
- She was in Las Vegas last week and visited the University of Las Vegas, who has an extensive solar facility, generating 700,000 KW energy. She is looking forward to our West Valley Campus generating energy.
- Attended the agenda review meeting and is pleased with the new policy on contracts being approved today. It is important to have the procedure in place with back up.
- She starts school on Monday - has to retrain in reading - starts work on Thursday.
- Her bank had given her a folder on fundraising ideas. She distributed copies to the Foundation, Alumni Association and Adrian Gonzales.

B. ASCOD

Simon Myers was present and gave a brief report.

C. FACULTY ASSOCIATION

Gary Bergstrom was present and gave a brief report.

D. C.O.D.A.A.

Stan Dupree was present and gave a brief report.

E. CSEA

Lauro Jimenez was present and gave a brief report.

F. COLLEGE OF THE DESERT ALUMNI ASSOCIATION

Gene Marchu was present and gave a brief report.

G. COLLEGE OF THE DESERT FOUNDATION

Colleen McBride was present and gave a brief report.

H. ACADEMIC SENATE

Zerryl Becker was present and gave a brief report.

RECESS: The Board took a 10 minute recess at 11:00 a.m.

VII. CONSENT AGENDA

Motion to approve by Aaron Bonner, second by Michael O'Neill.

Discussion: None

Roll call vote: 6 ayes, 0 nay, 0 absent, 0 abstain

Yes: Becky Broughton, John Marman, Charles Hayden, Michael O'Neill, Bonnie Stefan,
Aaron Bonner

Final Resolution: Motion carries

A. BUSINESS AFFAIRS – Human Resources

1. Classified – Appointments
2. Classified – Military Leave
3. Classified – Resignation
4. Classified – Working Out-Of-Class
5. Faculty – Appointments
6. Hourly Personnel – Student Workers, Tutors, Temporary & Substitute Employees
7. Employment Agreements
8. Classified – Reclassification of Position
9. Faculty – Extension of Assignment
10. Classified – New Job Description
11. Classified – Extension of Assignment

B. BUSINESS AFFAIRS – Fiscal Services and Facilities Services

1. Approval of Contracts
2. Payroll #1
3. To Approve Out-of-State Travel
4. Approval of Warrant Lists

IX. ACTION AGENDA

A. BOARD OF TRUSTEES

1. Proclamation: National Hispanic Heritage Month

Motion to approve by Charles Hayden, second by John Marman

Discussion: None

Roll call vote: 6 ayes, 0 nay, 0 absent, 0 abstain

Yes: Becky Broughton, John Marman, Charles Hayden, Michael O'Neill, Bonnie Stefan,
Aaron Bonner

Final Resolution: Motion carries

2. Revised Board Policy 2310: Regular Meetings of the Board

Motion to approve by Becky Broughton, second by Michael O'Neill.

Discussion: None

Roll call vote: 6 ayes, 0 nay, 0 absent, 0 abstain

Yes: Becky Broughton, John Marman, Charles Hayden, Michael O'Neill, Bonnie Stefan,
Aaron Bonner

Final Resolution: Motion carries

3. 2012 Board of Trustee Meeting Dates

Motion to approve by Aaron Bonner, second by Becky Broughton.

Discussion: After additional review of the dates approved last month Mr. O'Neill thought the Friday evening meetings would have a major impact on staff and he suggests moving those two meetings to the Thursday before; April 20 to April 19 and September 21 to September 20 and since both are normal dinner times he suggests having food. Trustee Broughton cannot meet the 3rd Thursday of September. Trustee Marman suggests the meeting in September could be kept on Friday but move it to the morning at the normal time of 9:30.

The later meeting would start at 4:00 with closed session and the regular meeting starting at 5:00.

Trustee O'Neill amended the motion with no objection from the original makers to change the April 20 date to April 19 starting at 4:00 p.m. with closed session first and the Friday, September 21 date will not change but will now start at 9:30 a.m. in the West Valley. Second by Becky Broughton. Trustee Broughton would like the board to re-evaluate the East and West valley meeting times when planning for 2013 as she thinks it important to try to have these meetings later in the day.

Roll call vote: 6 ayes, 0 nay, 0 absent, 0 abstain

Yes: Becky Broughton, John Marman, Charles Hayden, Michael O'Neill, Bonnie Stefan,
Aaron Bonner

Final Resolution: Motion carries

4. Resolution 081911-1 in Support of the Efforts of the University of California, Riverside for a School of Medicine

Motion to approve by Michael O'Neill, second by John Marman

Discussion: none

Roll call vote: 6 ayes, 0 nay, 0 absent, 0 abstain

Yes: Becky Broughton, John Marman, Charles Hayden, Michael O'Neill, Bonnie Stefan,
Aaron Bonner

Final Resolution: Motion carries

5. Revision of BP 6300 Fiscal Management

Motion to approve by Michael O'Neill, second by Becky Broughton.

Discussion: Dr. Deas worked with Trustees Broughton and O'Neill to address the members areas of concern regarding how contract information is reported to them. The policy is being revised to support the details of the procedure, provided for information later in the meeting. He extended his thanks to the 2 board members for the good work they did. They looked at 5 guiding principles. The first is compliance and the group discovered inadvertently we have been out of compliance for a number of years as it has not been approving or ratifying purchase orders, unless they had a contract attached to them. The second is transparency and in wanting

to maintain transparency they were very conscious in making the changes proposed, that they not diminish that transparency. The next two speak to how the board operates in efficiency and effectiveness. Trustee O'Neill's area of major concern was contracts ending before the board approves them and this policy/procedure addresses that concern. Trustee Broughton said they tried for a process that was implementable as everything cannot come before the board. Now they have an opportunity to know why it happened. Trustee Stefan commented the procedure is very clearly written. Dr. Deas invited questions pertaining to the procedure prior to approving the policy. There were none and the vote was taken.

Roll call vote: 6 ayes, 0 nay, 0 absent, 0 abstain

Yes: Becky Broughton, John Marman, Charles Hayden, Michael O'Neill, Bonnie Stefan,
Aaron Bonner

Final Resolution: Motion carries

B. PRESIDENT

1. Revised Administrative Procedure 2340: Agendas

Motion to revise by Michael O'Neill, second by Aaron Bonner

Discussion: none

Roll call vote: 6 ayes, 0 nay, 0 absent, 0 abstain

Yes: Becky Broughton, John Marman, Charles Hayden, Michael O'Neill, Bonnie Stefan,
Aaron Bonner

Final Resolution: Motion carries

C. BUSINESS AFFAIRS – Fiscal Services and Facilities Services

1. Notice of Completion – Infrastructure Phase II Project – MJS Construction Inc.

Motion to approve by Becky Broughton, second by John Marman

Discussion: none

Roll call vote: 6 ayes, 0 nay, 0 absent, 0 abstain

Yes: Becky Broughton, John Marman, Charles Hayden, Michael O'Neill, Bonnie Stefan,
Aaron Bonner

Final Resolution: Motion carries

2. Quarterly Financial Report 2010-2011

Motion to approve by Becky Broughton, second by Charles Hayden

Discussion: Trustee O'Neill asked why there no mention about the budget crisis at the end of this document. Wade Ellis, Director of Fiscal Services, said if we are not below the 5% we don't have to report it.

Roll call vote: 6 ayes, 0 nay, 0 absent, 0 abstain

Yes: Becky Broughton, John Marman, Charles Hayden, Michael O'Neill, Bonnie Stefan,
Aaron Bonner

Final Resolution: Motion carries

D. ACADEMIC AFFAIRS –Instruction

1. Approval of Articulation Agreements

Motion to approve by Aaron Bonner, second by Michael O'Neill

Discussion: Trustee Broughton asked why do we have an articulation agreement with Hemet? Mr. Herzek, Vice President Academic Affairs, said it is the only high school that has NATEF certification. They use our facilities because they have certification but are not a NATEF facility.

Mr. Herzek said this is a tremendous step forward. About 10 years ago, with changes in Title V, all articulation agreements between high schools and community college districts and ROP's were deemed null and void. When students went to transfer to four year universities and they had credit through articulation that became very questionable. So instead of dealing with the issue a decision was made at the state level to cancel all agreements. These are better than what was in place before because these are now based on credit by exam. Students who complete the course work in these ROP programs are eligible to take a credit by exam at COD and if they meet the criteria and pass that exam they will instantly get the credit.

Mr. Herzek was asked to explain ROP. These are the Regional Occupation Programs and are usually run by the County or local school districts. The ROP programs are open to all citizens age 16 and above and at a very low or no cost, provide career and technical education training. Trustee O'Neill asked if we have the exams in place or forthcoming. Mr. Herzek will check but believes they are in place. It is a COD-generated exam developed in collaboration with the regional occupation folks and COD. The next step with these agreements will take place next year when we will work on changing a policy that we outline in our college catalog. Right now a student has to complete 12 resident units at COD before being eligible to sit for a credit by exam. The district has the ability to waive that for high school students who are involved in the articulation program. Trustee Broughton asked Mr. Herzek to update the Board after students go through the process. Trustee Marman asked if we were also working with local schools and we are.

Roll call vote: 6 ayes, 0 nays, 0 absent, 0 abstain

Yes: Becky Broughton, John Marman, Charles Hayden, Michael O'Neill, Bonnie Stefan,
Aaron Bonner

Final Resolution: Motion carries

X. ITEMS OF INFORMATION

1. Administrative Procedure 6300(a): Board Approval or Ratification of Purchase Orders, Contracts, and Warrants.

Trustee Marman asked if we enter into a multi-year contract are we following up during the contract year. Dr. Deas reported it is standard procedure to check all invoices against the original purchase order and contract.

XI. SUGGESTIONS FOR FUTURE AGENDAS

Aaron Bonner – none

Becky Broughton – requested an overview of our certificate programs - like alternate energy.

John Marman – regarding the bond measure he would like us to take a second look at areas that are planned for building, in relation to what will be here in the future. Areas like child care, which is a very expensive program and also athletics. Dr. Deas confirmed the facility master plan, which is bond funded, is validated by the Educational Master Plan as it currently exists.

Michael O'Neill – would like to have Dean Goetz, Bookstore manager, present in regards to the legislation that could impact us if we don't have student textbook available, regarding liability.

Charles Hayden – none

Bonnie Stefan – would like an update on the CalPASS program

XII. BOARD COMMENTS

Aaron Bonner acknowledged the ASCOD President for his great leadership during the transitional retreat. He thanked Aries Jaramillo, former Student Trustee for presenting the Proclamation today.

Becky Broughton- none

Charles Hayden - thanked Red Rock Community College for their support and participation in today's meeting.

John Marman – none

Michael O'Neill – asked when will the think tanks start? President Patton will give an update during today's study session

Bonnie Stefan - none

XIII. STUDY SESSION

ADMINISTRATIVE REPORTS

Trustee Hayden was not present for the study session portion of the meeting.

President Patton updated the members on the recalculation of FTES. Last June the Chancellor's Office had indicated there were college's using Datatel software and had miscalculated FTES based on catalog hours instead of actual class hours. We brought a consultant in from the chancellor's office and for the last 2 months we have been going through

each year manually recalculating FTES. There is no firm figure as yet, but it is averaging between 2.4 and 2.8 percentage variance for 3 years. For 5 years we have no risk at all; 2003-2004, 2007-2008, 2008-2009, 2009-2010 and 2010-2011. For 2004-2005 through 2006-2007 we were overpaid between \$800,000 to \$1.6M. The Chancellor's office will give us 3-5 years to repay the overpayment.

Mr. Herzek explained the FTES miscalculation further. The areas of issue were with our weekly and daily census classes. There were no issues with positive attendance classes, as they are based on the actual attendance of the students. When we moved from a previous system in 03-04 year we customized our ability to appropriately count FTES. FTES is based on student contact hours, which is very different from clock hours, which is different than catalog hours. Student contact hours requires us to provide students with a 10 minute break per hour, which turns 1 clock hour into a 50 minute scheduled hour. The calculating of FTES needed to be on the hours actually scheduled in our published schedule of classes. When we moved to the Datatel system it provided us another option to calculate FTES. Datatel is a product used worldwide. During the implementation of Datatel it was thought to use catalog hours times the number of students in a class divided by 525. We shifted to catalog hours as we thought when we schedule classes we schedule classes more than catalog hours. The variance was insignificant because we scheduled more in some instances, as well as less in some instances. It was also thought at that time it was less prone to error because it was a less complex calculation.

Trustee Marman asked if it was the Datatel system or the way we thought we could do it. President Patton explained it was the way we thought we could do it. The Datatel schools we were in contact with all agreed it was the way to do the calculations. It wasn't a failure on Datatel's part.

Student Trustee Bonner asked the significance of the number 525. Mr. Herzek said it is the number given to all colleges by the Chancellor's office and it based upon students enrolled in 15 hours, in 5 days of instruction and also enrolled in a total of 15 units. President Patton said it is the number primarily used to calculate full-time equivalent students (FTES) and it's the number of hours the student would accumulate carrying a full load for one semester.

Edwin Deas, Vice President, Business Affairs, reported we are moving into a very busy phase of the facilities program and most months there will be a presentation to the board. Steve Renew, Director, Facilities, explained we are in the schematic design phase. Design details will be brought back to the board next month. Mr. Renew introduced Thea Van Loggerenberg from PMSM Architects. Ms. Van Loggerenberg reviewed a power point on the Monterey Entrance re-design.

Redistricting

Dr. Deas introduced Kimi Shigetani from the Community College League and she introduced Paul Mitchell and Nick Warshaw of Redistricting Partners, and Elaine Reodica and Stacy Berger from the CCLC. A copy of the Power Point and the CVRA Analysis were distributed. Mr. Mitchell reviewed the Power Point with the members. Four redistricting options were offered. Discussion followed on the pros and cons of the various options.

There was consensus among trustees present that Option D is preferred as it provides continuity/contiguous areas. This plan uses the school district boundaries as a guide. It represents the greatest departure from the existing lines and increases minority voting potential. The members asked for a timeline and next steps.

Mr. Mitchell laid out the next steps in the process:

- Mr. Mitchell will provide electronic and paper maps that drill down into option D to provide more detailed information as to the boundaries and where they will fall.
- Through the PIO, we will communicate to the public that the Board will make a decision at its September meeting and is leaning toward Option D. The information will go out/ be displayed in the CSSC as soon as possible and comments will be solicited up to and including the September meeting.
- Decision on Option D will be an agenda item for September.
- A public hearing will be held at the September meeting then a decision will be made.
- That decision will be conveyed to Paul who will convey it to the County Registrar.

The district lines must be redrawn but it is the Board's decision as to whether to move to District elections vs. at-large elections. Discussion followed. Mr. Mitchell thought district voting was an excellent choice, as he felt the District's vulnerability to a California Voting Rights Act (CVRA) lawsuit is very high, because of the fact there are dense populations of minority groups and because of the racially-polarized voting in the area.

Trustee Broughton believes most trustees would see the big picture and vote for the good of the college, but with district voting there is the potential for a trustee to focus on their area only and not see the big picture. Trustee Marman thought if trustees were elected by district the constituents of that district know you better. Trustee O'Neill reminded the members when Copper Mountain was a part of College of the Desert there was a representative from Copper Mountain that was focused on their area and their agenda only. The members agreed it is difficult to control this.

Trustee O'Neill asked what are the next steps regarding the district elections. Mr. Mitchell suggested the following timeline:

District rather than at-large elections

- Item will be an agenda item for the September meeting.
- Input will be received in the public hearing.
- Decision will be made.
- Decision will be conveyed to Mr. Mitchell.
- The legislative change allowing the Board of Governors to approve such local decisions rather than have them approved in a costly county election is anticipated in September.

- Mr. Mitchell will inform County of Riverside of COD's intention to rely on the legislative change.
- Assuming the legislation succeeds, Paul will present COD's decision to the Board of Governors in January 2012 for approval.
- Should the legislation fail, arrangements will be made for the COD decision to be placed on the next available County ballot.

Dr. Edwin Deas, Vice President Business Affairs

Dr. Deas reported that during the summer we focused on certain tasks for the study groups but didn't over-emphasize the fiscal situation, as it wasn't part of the mandate for summer study groups. They were given no financial information until the end.

The financial position is very volatile. There are constant changes with the state budget. There is an outside chance there could be a mid-year cut. We received new information at a budget workshop this week. We saw very careful calculations of the mid-year cutbacks with specific dollars assigned to College of the Desert. We have factored in the mid-year cuts and we are looking at 11-12 as our base year, and looking out 4 years. It also means that 10-11 is not completed as yet. We have delayed hiring, which saves money. Many of these "little" things translate into a better year-end balance than we had budgeted. There was very focused work done earlier this year to come up with \$2M for 11-12 and that plan is operationalized. He reviewed a slide which showed five year budget projections 11-12 through 15-16.

Dr. Deas also reviewed the slide outlining the summer study group setting targets for budget action plans. There had been discussion as to whether we should give each think tank a target. It was decided not to do so as we want them to focus on an institutional target. Trustee O'Neill asked if we were only looking at reductions or also at ways to increase revenue? Dr. Deas said one think tank is focusing on revenue generation.

Farley Herzek, Vice President Academic Affairs

Mr. Herzek updated the members on the fee-based move of our ESL program, literacy level 1 and 2. We were at 355 total students enrolled and now, as of Tuesday night we have 424 students enrolled, with a class size average of 26.5 in 16 sections of classes. The threshold, break-even point was approximately 25 students per section class. There was concern at the last board meeting regarding the Indio site enrollments. These are 11 and 12 for both sections. We know we will get a rush next week and the numbers will increase further. These classes will run regardless of whether the numbers increase. We were offering 23 sections of these classes per semester, with 192 hours of instruction. The ESLN classes at 192 hours, cost approximately \$7000 per class. This has saved the District approximately \$330,000 out of the general fund.

Mr. Herzek referenced the report given earlier by Stan Dupree, C.O.D.A.A. representative regarding changes at the Faculty Resource Center (FRC). This change is due to the great efforts by the Dean of Library and Learning Resources, Carl Phillips working with the Adjunct Faculty. We reduced costs in the FRC by \$80-\$90,000 per year.

Mr. Herzek also reported our science faculty, working with Cal State San Bernardino faculty, secured a STEM (Science, Technology, Engineering, Math) grant, with our share being approximately \$600,000. These funds will be used to provide internship programs for our students at NASA.

Mr. Herzek reviewed a Power Point with the members on the summer think tanks. The summer groups were a good first step to prepare the think tanks to hit the ground running in the fall.

Adrian Gonzales, Interim Vice President, Student Affairs, reviewed a Power Point on the fee payment deadline.

Trustee Broughton is interested in an update on the assessment for program and degree student learning outcomes. President Patton reported that one of the recommendations from the accreditation team we must have our SLO and assessment process fully in place by October 2012. Mr. Herzek thought by the end of this fall semester we will be at 66% that have gone through the full cycle. We will need to be at 100% by Fall 2012 to meet the accreditation recommendation.

ADJOURN

Motion to adjourn by Becky Broughton. Meeting adjourned at 3:38 p.m.

By: Michael O'Neill, Clerk



COLLEGE OF THE DESERT
Opening the Door...

Report on the Progress of the
Summer Think Tanks

College of the Desert
Board of Trustees Presentation

Friday, August 19, 2011



COLLEGE OF THE DESERT

Opening the Door...

COD Summer Study Groups

Open to **ALL** Faculty – Students – Staff – Leadership

52 Signed Up To Participate + 2 Advisors – (no shows or one time attendees)

Approximately 13 FT Faculty, 5 Adjunct, 11 Leadership and 18 Staff

Curricular
Activities

Co & Extra
Curricular
Activities

Operations

Revenue/
Student
Fees

Facilities,
Infrastructure
& Campuses

Compensation
Workforce
Reductions

***Co-Chaired by Leadership, Faculty and/or Classified Staff
Selected by Study Group Participants***



COLLEGE OF THE DESERT

Opening the Door...

COD Summer Study Groups

*Utilize summer months to “Hit The Ground Running”
right at the start of the Fall Semester*

Hand off all work to CPC Fall Think Tanks to use as they see fit

- 1-Identify specific items to study/analyze within each Summer Study Group.**
- 2-Determine what Information or data is required for each item:
Internal - External**
- 3-Develop structure and processes for Fall Think Tanks to follow :
Meeting Schedule, Timeline, Reporting Format
Process to Request Data, Chairs/Co-Chairs**



COLLEGE OF THE DESERT

O p e n i n g t h e D o o r . . .

COD Summer Study Groups

DRAFT Meeting Structure

(College Planning Council will ultimately decide on meeting schedule)

- **Seven Scheduled Meetings**

6/20, 6/27, 7/11, 7/18, 7/25, 8/1, 8/8

(Co-Chairs convened additional meetings in addition to the above times)

- **Individual Study Groups Met for 1 ½ Hours or more**
- **All Participants Met Together for ½ Hour To:**
 - **Share Ideas/Information**
 - **Discuss/Question**
 - **Cross Fertilization**



COLLEGE OF THE DESERT
Opening the Door...

**All Summer Study Group Work Will Be Handed Off To The
College Planning Council Think Tanks**

**College Planning Council is the COD Recognized AB 1725
Recommending Body That Allows For Faculty, Staff,
Student and Leadership Input**

CPC Think Tanks Will Be Made Up Of:

**CPC Membership and Open To All Faculty, All Staff,
Student Leadership, Administration & Community**

(as Represented by the Alumni Association and COD Foundation Boards)



COLLEGE OF THE DESERT
Opening the Door...

COD Summer Study Groups/Think Tanks

DRAFT Timeline/Deadlines

(College Planning Council will ultimately make decisions regarding timelines)

- **9/9 /11 CPC Think Tanks Begin Their Work**
- **2/10/12 CPC Think Tank Recommendations to President**
- **3/9/11 President Shares Recommendations as Information to Full College Planning Council**
- **President Presents Recommendations to Board of Trustees**
- **Public Has Opportunity to Respond to Recommendations at Board of Trustees Meeting**



COLLEGE OF THE DESERT
Opening the Door...

COD Summer Study Groups

Products to **Assist** CPC Think Tanks

- **DRAFT CPC Think Tank Timeline**
- **DRAFT CPC Think Tank Reporting Document**
- **DRAFT CPC Think Tank Data Source Grid**



COLLEGE OF THE DESERT
Opening the Door...

Questions?

The strength of the team is each individual member...the strength of each member is the team

Phil Jackson

College of the Desert

College Planning Council THINK TANK SCHEDULE

Below are suggested benchmarks and agenda items for the College Planning Council and the Think Tanks to help facilitate meeting the **March** budget deadline

Individual Think Tank Schedule

All individual Think Tank meetings are to be scheduled at the discretion of each Think Tank

Select Co-chairs

Update new members on work of Summer Study Group

Discuss current data and information

Discuss deliverables, template to be completed

Timelines

Means of communication between Think Tank group

Sharing of information with constituents by Think Tank members

Other responsibilities of Think Tank team members?

All Think Tank data/information and minutes are to be posted on Portal

1 CPC (meeting #1) **September 9, 2011**

Budget update – Fiscal Target for Think Tanks

Review Charge of the CPC Think Tank (recommending body to the President)

Think Tank membership; Faculty, Students, Staff, Leadership, Summer Study Group Members, Community Representation (Foundation and/or Alumni Association Membership)

Co-chairs 1-leadership appointed by President Patton, 1-faculty/staff selected by Think Tank

Meeting schedule

Participants' commitment

Please note; Think Tanks will be represented by their Co-chairs (or their designees) at monthly CPC meetings. All other Think Tank Team participants may attend monthly CPC meeting – but their attendance is not required.

2 CPC (meeting #2) **October 14, 2011**

Share Think Tank templates for prioritization

Share process for communication within Think Tank

Share data and information to date

Revised 8/8/11

Discussion between Think Tanks
Questions of Think Tanks
Other

3 CPC (meeting #3) November 4, 2011

Continue Data/information gathering
Continue dialog between Think Tank Teams
Discuss status of data/information collection
Share data and information to date
Discussion between Think Tanks
Questions of Think Tanks
Other

4 CPC (meeting # 4) December 2, 2011

Each Think Tank is to Share "test" area process and results with CPC
Discussion between Think Tanks
Questions of Think Tanks
Other

5 CPC (meeting # 5) February 10, 2012

Extended meeting
Present and discuss final reports/recommendations to President Patton

6 CPC (meeting #6) March 9, 2012

President presents his recommendations to the CPC as an information item
Following this CPC meeting President presents his recommendations to the Board of Trustees

College of the Desert

College Planning Council

THINK TANK REPORTING FORM

This form may be modified by the Think Tank to meet the specific needs of the area being studied for recommendation

1. Think Tank Membership *(# of team members to be determined by individual Think Tanks)*

CPC members, Student, Summer Study Group members, COD faculty, staff, leadership, Community representation (from Foundation, Alumni Association)*

Please note; All Think Tanks will be represented by their Co-chairs (or designees) at monthly CPC meetings. All other Think Tank members can attend monthly CPC meetings, but their attendance is not required.

Two Co-chairs: 1 Faculty or Staff to be selected by Individual Think Tank – 1 Administrator assigned by President Patton

Administrator's Administrative Assistant will take meeting notes

**not required*

2. Brief description of current program structure/activity/service studied

Provide a brief description of what services/activities it provides to the students, staff, and/or College (if applicable)

3. Type of Program

Identify whether the area under study is a legal requirement, necessary for operations, or optional

		Comments
<input type="checkbox"/> Legal Requirement	(provide legal citation)	<input type="checkbox"/>
<input type="checkbox"/> Necessary for Operations	(provide explanation)	<input type="checkbox"/>
<input type="checkbox"/> Optional	(provide explanation)	<input type="checkbox"/>

4. Stakeholders Input (Qualitative Data)

*Stakeholders are to be engaged by reviewing quantitative data/information as well as **directly responding** to qualitative data/information requests. Qualitative data/information may also come from additional sources.*

5. Think Tank Data/Information (Quantitative Data)

*attach data/information sources
attach all data/information*

6. Recommendation to President Patton

O Continue	O Continue /w Qualifications	O Discontinue	O No Recommendation <i>Must provide rationale as to why the Think Tank could not provide a recommendation</i>	O Recommend New/Innovative Program/Service <i>Must be within the scope of the College meeting its fiscal target</i>
-----------------------------	---	--------------------------------	---	---

7. Rationale for recommendation and qualifications

8. Provide an evidence based rationale for how the following may be impacted by recommendation:

Students:

Community:

Budget:

Academic Programs:

Personnel:

Service:

Other:

Some categories above may not be applicable to your area of study. Responses can be in bullet form.

9. Additional Information (if applicable)

DRAFT

SUMMER STUDY GROUPS – AUGUST 8, 2011

SETTING TARGETS FOR BUDGET ACTION PLANS

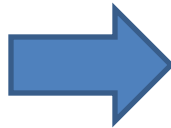
**FOR 8-19-11
BOARD MEETING**

Updated Projected Budget Deficits	
FY 2012/13	\$ --
FY 2013/14	\$2,336,375
FY 2014/15	\$1,816,259
FY 2015/16	\$ 800,000

Distribution of Target by Expenditure Objects		
Salaries	68%	\$1,632,000
Benefits	18%	\$ 432,000
Non-Compensation Costs	14%	\$ 336,000
TOTAL	100%	\$2,400,000

Distribution of Target by Expenditure Functions		
Instruction	53%	\$1,272,000
Instructional Admin.	8%	\$ 192,000
Instructional Support	6%	\$ 144,000
Counseling	1%	\$ 24,000
Other Student Support	7%	\$ 168,000
Facilities	9%	\$ 216,000
Business Affairs & Institutional Support	16%	\$ 384,000
TOTAL	100%	\$2,400,000

Institutional Targets for Budget Action Plans
\$2,400,000 Per Year



CVRA Analysis

Desert Community College District

The California Voting Rights Act was enacted in 2002 and focuses exclusively on the use of at-large election systems. As defined in the law, at-large systems include any election method except single member districts in which only the area voters select their representative. The law does not create any oversight agency or empower the Board of Governors to implement the law, instead, it is left to the courts. Unlike federal Voting Rights Act cases, CVRA suits can be filed in local courts and costs for litigation fully recoverable from the successful plaintiff. In order to be successful, the plaintiffs must only prove that racially polarized voting exists and that the subgroup could influence elections under a different system.

Racially polarized voting is where a protected minority group has a preference for one candidate or issue, while the majority has a preference for another. In order to establish racially polarized voting, California law requires courts to look to methodologies used in applicable federal cases to enforce the federal Voting Rights Act. In *Thornburg v. Gingles*, 478 U.S. 30 (1986), the Supreme Court noted that reliable inferences about voting behavior could be derived from a number of techniques, including homogenous precinct analysis (HPA) and regression analysis.

One circumstance that may be considered under CVRA is the extent to which candidates who are members of a protected class, and who are preferred by voters of the protected class, have been elected to the governing body of a political subdivision. This is considered probative evidence, but it alone does not preclude or create a successful claim under CVRA.

Thornburg v. Gingles

In the precedent setting *Gingles* case the Supreme Court upheld the trial court's decision that racially polarized voting existed in North Carolina. The evidence included statistical analysis that showed African American support for black candidates was overwhelming in almost every election. In all but 5 of 16 primary elections, African American showed overwhelming support for African American candidates.

In contrast, the trial court found that a substantial majority of white voters would not vote for an African American candidate. In the general elections, white voters almost always ranked black candidates either last or next to last in the multicandidate field, except in heavily Democratic areas where white voters consistently ranked black candidates last among the Democrats, if not last or next to last among all candidates.

The court went on to state:

"...Multimember districts may impair the ability of blacks to elect representatives of their choice where blacks vote sufficiently as a bloc as to be able to elect their preferred candidates in a black majority, single-member district and where a white majority votes sufficiently as a bloc usually to defeat the candidates chosen by blacks. It is the difference between the choices made by blacks and whites – not the reasons for that difference – that results in blacks having less opportunity than whites to elect their preferred representatives. Consequently, we conclude that under the "results test" of § 2, only the correlation between race of voter and selection of certain candidates, not the causes of the correlation, matters."

Measuring Degree of Polarized Voting

Redistricting Partners utilizes four methods for determining racially polarized voting for the purposes of the CVRA:

Visual Analysis

The simplest method for estimating voting behavior by race/ethnicity is to overlay a map of election results with a similar map of ethnic densities. This is a non-statistical technique that can provide a user-friendly understanding of the relationship between ethnic groups and election results. When the pattern of elections and ethnic groups looks similar there is a strong rationale for further analysis.

Homogeneous Precinct Analysis

The first level of data analysis is of voting patterns in homogenous census blocks – small areas that are composed of a single racial group. The voting patterns of minorities in these blocks are analyzed and compared to similar areas with very few minority voters.

In the absence of exit polls and direct access to individual ballots, this common measure of racially polarized voting provides a high-confidence way to see voting patterns. Since census blocks are usually not exclusively one race, blocks with greater than 80% or more individuals of a single race are considered homogeneous. In order to have statistical validity there should be a large number of homogenous precincts. The aggregation of many census blocks will provide a final analysis of several thousand individual vote results in a cluster that is 90% or more of one single race.

It should be noted that HPA analysis conducted by Redistricting Partners is based on a smaller unit of analysis and more individual minority group election results than the Supreme Court was provided in *Gingles*. This is due to the fact that our California dataset directly identifies the geocoded voter 80% of the time, with only 20% of precinct results statistically applied.

This data does have a small margin of error, similar to a poll. However, where most polls are 300-500 respondents, this dataset would have tens of thousands of actual vote results. In this analysis the margin of error is lower and the degree of confidence is higher than any poll.

The HPA analysis can also be used to show turnout patterns for ethnic groups. Large differences between voter participation by whites and protected ethnic subgroups could point to overarching political disenfranchisement.

Regression / Trend Line Analysis

A trend line analysis is done using all the census block level election results from a candidate race or ballot measure. The results for each census block are placed in a formula with a variable to be studied, such as ethnicity of that census block. The data points are each individually plotted with a simple regression to overlay a trend line. This trendline will show how the vote for or against a candidate or ballot measure increases or decreases as the variable changes.

The resulting formula in the format of $Y=mX+B$, with m =slope, provides a quick way to compare the trend between different groups. A large positive slope shows a correlation between votes and that ethnic group, pointing to bloc voting. A negative slope would show that the group is bloc voting against the candidate or issue. A low absolute value for m suggests there is little or no correlation between the density of the variable group in the census block and the election outcome.

In cases where the racially polarized voting cannot be identified through the above means, a deeper regression analysis can be conducted to identify the impact of ethnic subgroup as compared to other variables such as income, age, gender, educational level, etc... This Multivariate Regression Analysis and Environmental Regression Analysis provides one additional layer of information when the results from other methods are unclear.

Why is the Analysis Necessary?

Because of the CVRA, and a growing number of lawsuits, districts have an obligation to do an analysis of racially polarized voting and densities of ethnic subgroups. The analysis will provide the district with an understanding of their vulnerability under the state law and help the board determine if a change in election system is warranted.

Importantly, the methods of analysis done for districts is exactly the type of work done by outside groups that would be looking into lawsuits. Having a complete analysis provides an understanding of the potential case that could be brought by these groups.

CALIFORNIA ELECTIONS CODE
SECTION 14025-14032

14025. This act shall be known and may be cited as the California Voting Rights Act of 2001.

14026. As used in this chapter:

(a) "At-large method of election" means any of the following methods of electing members to the governing body of a political subdivision:

(1) One in which the voters of the entire jurisdiction elect the members to the governing body.

(2) One in which the candidates are required to reside within given areas of the jurisdiction and the voters of the entire jurisdiction elect the members to the governing body.

(3) One which combines at-large elections with district-based elections.

(b) "District-based elections" means a method of electing members to the governing body of a political subdivision in which the candidate must reside within an election district that is a divisible part of the political subdivision and is elected only by voters residing within that election district.

(c) "Political subdivision" means a geographic area of representation created for the provision of government services, including, but not limited to, a city, a school district, a community college district, or other district organized pursuant to state law.

(d) "Protected class" means a class of voters who are members of a race, color or language minority group, as this class is referenced and defined in the federal Voting Rights Act (42 U.S.C. Sec. 1973 et seq.).

(e) "Racially polarized voting" means voting in which there is a difference, as defined in case law regarding enforcement of the federal Voting Rights Act (42 U.S.C. Sec. 1973 et seq.), in the choice of candidates or other electoral choices

that are preferred by voters in a protected class, and in the choice of candidates and electoral choices that are preferred by voters in the rest of the electorate. The methodologies for estimating group voting behavior as approved in applicable federal cases to enforce the federal Voting Rights Act (42 U.S.C. Sec. 1973 et seq.) to establish racially polarized voting may be used for purposes of this section to prove that elections are characterized by racially polarized voting.

14027. An at-large method of election may not be imposed or applied in a manner that impairs the ability of a protected class to elect candidates of its choice or its ability to influence the outcome of an election, as a result of the dilution or the abridgment of the rights of voters who are members of a protected class, as defined pursuant to Section 14026.

14028. (a) A violation of Section 14027 is established if it is shown that racially polarized voting occurs in elections for members of the governing body of the political subdivision or in elections incorporating other electoral choices by the voters of the political subdivision. Elections conducted prior to the filing of an action pursuant to Section 14027 and this section are more probative to establish the existence of racially polarized voting than elections conducted after the filing of the action.

(b) The occurrence of racially polarized voting shall be determined from examining results of elections in which at least one candidate is a member of a protected class or elections involving ballot measures, or other electoral choices that affect the rights and privileges of members of a protected class. One circumstance that may be considered in determining a violation of Section 14027 and this section is the extent to which candidates who are members of a protected class and who

are preferred by voters of the protected class, as determined by an analysis of voting behavior, have been elected to the governing body of a political subdivision that is the subject of an action based on Section 14027 and this section. In multiseat at-large election districts, where the number of candidates who are members of a protected class is fewer than the number of seats available, the relative groupwide support received by candidates from members of a protected class shall be the basis for the racial polarization analysis.

(c) The fact that members of a protected class are not geographically compact or concentrated may not preclude a finding of racially polarized voting, or a violation of Section 14027 and this section, but may be a factor in determining an appropriate remedy.

(d) Proof of an intent on the part of the voters or elected officials to discriminate against a protected class is not required.

(e) Other factors such as the history of discrimination, the use of electoral devices or other voting practices or procedures that may enhance the dilutive effects of at-large elections, denial of access to those processes determining which groups of candidates will receive financial or other support in a given election, the extent to which members of a protected class bear the effects of past discrimination in areas such as education, employment, and health, which hinder their ability to participate effectively in the political

process, and the use of overt or subtle racial appeals in political campaigns are probative, but not necessary factors to establish a violation of Section 14027 and this section.

14029. Upon a finding of a violation of Section 14027 and Section 14028, the court shall implement appropriate remedies, including the imposition of district-based elections, that are tailored to remedy the violation.

14030. In any action to enforce Section 14027 and Section 14028, the court shall allow the prevailing plaintiff party, other than the state or political subdivision thereof, a reasonable attorney's fee consistent with the standards established in *Serrano v. Priest* (1977) 20 Cal.3d 25, 48-49, and litigation expenses including, but not limited to, expert witness fees and expenses as part of the costs. Prevailing defendant parties shall not recover any costs, unless the court finds the action to be frivolous, unreasonable, or without foundation.

14031. This chapter is enacted to implement the guarantees of Section 7 of Article I and of Section 2 of Article II of the California Constitution.

14032. Any voter who is a member of a protected class and who resides in a political subdivision where a violation of Sections 14027 and 14028 is alleged may file an action pursuant to those sections in the superior court of the county in which the political subdivision is located.

The District

Desert Community College District is located in Riverside County and includes the cities of Palm Desert, Rancho Mirage, Cathedral City, Coachella, Indian Wells, Indio, and Thousand Palms. Overall district population has soared in the last decade to a total of 427,816 residents, growing by 105,286 or nearly 33%. Much of this growth is seen in the western portion of the District.

The District's single college, College of the Desert, was founded in 1958 and opened its doors in 1962. Today it has 34,747 Fall 2010 enrollments with a 12,143 Fall 2010 headcount. The District is governed by five elected members on its Board of Trustees and a Student Trustee elected by the Student Body. Elected Trustees represent five different areas of the District, but are elected at-large.

This at-large election system and its applicability under the California Voting Rights Act is the focus of our analysis.

Demographic Breakdown

In the last decade, Desert Community College District has seen significant population growth, nearly tripling the state average, as well as significant shifts in the ethnic make-up of the population. Latinos jumped to 52% of the population, up from 46% 10 years ago, whereas Asians remain steady at 3%, and African Americans comprise just 2%.

Across the ethnic groups significant growth is apparent within the subpopulations. Latinos grew by 48%, or 72,075, for a total population of 221,544. African Americans grew by 48% for a total growth of 3,429 and total African American population of 10,546. Asians saw the greatest percentage growth at 72% with 4,878 new residents for a total Asian population of 11,684. Among enrolled students in the College of the Desert Community College District, nearly 57% are identified as Hispanic.

Under the State and Federal Voting Rights Act these populations will be considered along with a census calculation of Citizen Voting Age Population (CVAP). The high number of non-citizen Latinos will cause their CVAP number to drop as a percentage of the population and increase the percentage of Asians and African Americans. Voting Rights Laws become operative when these protected ethnic populations are either 50% of an electoral area (federal VRA Section 2 standard) or have the ability to influence an election in an area (state CVRA standard).

Past Trustee Election Information

A review of past Trustee election information reveals that incumbents have been extremely successful in their elections and new board members are only elected when an incumbent does not run. The pool of candidates does not appear to mimic the overall ethnic composition of the district population. In fact, all five of the sitting trustees, as well as the historical incumbents, are white and non-Hispanic. This alone does not determine the applicability of the chosen election systems, but it can be used as a piece of evidence in a CVRA lawsuit.

Ethnic Voter Participation

An HPA Analysis of the district provides an extremely large dataset for review of voting patterns and participation among Latinos and Whites. Upon review we found that African Americans and Asians are not concentrated enough to provide reliable data or have enough concentration in any portion of the district to create an "influence" election area.

As can be seen below, the HPA analysis provides 1,300 census blocks that are on average 93% Latino and another 3,500 census blocks that are 92% White. In both cases the raw number of persons analyzed exceeds 130,000.

Desert CCD HPA Analysis – Overall Counts

	Latino	White
Census Block Count	1382	3518
Total Pop	136,462	142,920
% Ethnic	93.38%	92.10%

This analysis shows the largest non-white voting block, Latinos, with a very low historic participation as a percentage of their overall population. While the Latino community in the CCD represents 52% of the total population, only 25% are identified as being eligible voters. As a result, despite representing a clear majority of the CCD's population, Latino voters comprise only 21% of the electorate.

Looking closer at the participation of registered voters, Latinos cast ballots at a rate 20-30% lower than whites. Latino turnout was as low as 11% of registered voters in the 2006 Primary. At their highest turnout rate of the last three election cycles, Latino voters participated at a rate of 55%, still lower than the non-Latino average.

Desert CCD HPA Analysis – Turnout Statistics

	Latino	White	Latino Underperformance
Registration	28,843	79,871	
% Reg'd/Pop	21.14%	55.89%	34.75%
Voted '06 P	11.16%	33.57%	22.41%
Voted '06 G	27.40%	58.31%	30.91%
Voted '08 P	14.16%	35.36%	21.21%
Voted '08 G	55.08%	81.10%	26.02%
Voted '10 P	16.79%	48.93%	32.13%
Voted '10 G	41.11%	74.75%	33.64%

This chronic underperformance could point to a disenfranchised voter community negatively impacted by the overall politics, socioeconomics and other factors. The issue is not something within the control of the district, however the obligations of the district could be impacted by this larger political-cultural issue.

Ethnic Voter Influence | HPA

In many races, the Latino voting population has shown a tendency to prefer candidates with Latino surnames. This is demonstrated by an HPA analysis of voting patterns that shows a 26-point shift toward Latino candidates when those census blocks are compared to voting data for predominantly white census blocks. In some races, Latino blocks were up to 48% more likely to vote for Latino Candidates.

Multiple examples exist for this tendency, the most compelling cases as identified through HPA analysis are as follows:

In the 2010 Insurance Commissioner's race, Dave Jones was favored among both Latino voters and White voters. This becomes relevant when the support rates are compared between Latino and White voters, where Latino voters supported DeLaTorre in far greater numbers than white voters, at a divergence of 37.5%.

2010 Insurance Commissioner Democratic Primary		
	<i>Latino</i>	<i>White</i>
Jones	52.33%	71.08%
DeLaTorre	47.67%	28.92%
Jones Advantage	4.66%	42.16%

Also of significance is the 2010 Attorney General contest. Along similar lines to the Insurance Commissioner's contest, there is a stark contrast between Latino and White Voter's support patterns. Latino voters favor Torrico slightly, while White voters strongly support Harris. The support patterns differ by over 36%, demonstrating a strong racial polarization in the contest.

2010 Attorney General Democratic Primary		
	<i>Latino</i>	<i>White</i>
Harris	45.45%	63.58%
Torrico	54.54%	36.41%
Harris Advantage	-9.09%	27.17%

The most compelling candidate race analysis is from the open 2008 legislative General Election between Manuel Perez and Gary Jeandron. This race shows divergent results for the two elections with a total spread of 50% between from Latinos to Whites in candidate performance.

2008 Assembly General		
	<i>Latino</i>	<i>White</i>
Jeandron	22.2%	47.1%
Perez	74.1%	48.2%
Perez Advantage	51.9%	1.1%

Finally, Proposition 187 from 1994 is regularly used for analysis even though the data has less veracity, particularly in areas with significant population growth in the intervening 17 years. However, even with the data's faults, this election is commonly used. It was most recently utilized by the California Redistricting Commission for their racially polarized voting analysis and determinations of Section 2 Voting Rights Act districts in Los Angeles.

Proposition 187		
	Latino	White
Yes	33.3%	68.0%
No	66.7%	32.0%
Yes Advantage	-33.4%	36%

Ethnic Voter Influence | Bivariate Regression Analysis

The most data rich election result from the past five years is the Assembly contest between Manuel Perez and Gary Jeandron. As analyzed in the HPA section this seat shows a 50% diversion in results based on a review of election results from 90%+ Latino census blocks and 90%+ White blocks.

Using a scatterplot analysis and determining the formula for a trend line provides strong evidence of racially polarized voting – a pattern that is even greater than the partisan influence of voting in this particular election.

In the graphs shown on the following pages, the point on the horizontal axis at which there are no Latinos (0% Latino) is the estimate of how many Whites (Non-Latinos) voted for the 2008 Assembly Democrat. The point at which the line reaches 100% Latino is the estimate of the percentage of Latinos that voted for the same candidate. These models are only estimating about 30 to 40% of variability in voting behavior yet the multivariate regressions account for between 70 to 80% of the variability.

Using the regression line created by census block data line attached, we see a trend line that is $y = 0.4946x + 0.2944$

$$y = 0.4946(1) + 0.2944 = 0.789$$

78.9% of Latinos voted for Assembly Dem

$$y = 0.4946(0) + 0.2944 = 0.2944$$

29.4% of Whites (Non-Latinos) voted for Assembly Dem

Regan Maas, a researcher at California State University Northridge did a confirming analysis of this voting based on census block group level data. Using her regression line: $y = 0.3061648x + 39.63817$ we can get similar estimates, as follows:

$$y = 0.3061648(100) + 39.63817 = 70.25465$$

70.3% of Latinos voted for Assembly Dem

$$y = 0.3061648(0) + 39.63817 = 39.63817$$

39.6% of Whites (Non-Latinos) voted for Assembly Dem

The bivariate correlation between Percent Latino and Percent Assembly 08 Dem is strong at 0.5880. Percent White v. Percent Assembly 08 Dem is -0.5587.

Running the same analysis on the White candidate shows 26.8% of Latinos and 57% of Whites (Non-Latinos) voted for that candidate. This isn't as extreme a racially polarization, although there is a level of polarization in that each group is voting in opposite directions overall with a threshold of around 60%.

When the homogeneous precincts analysis results for Assembly 2008 is added it supports the Latino polarization numbers with 74.1% of Latinos voting for the Latino candidate and only 22.2% for the white candidate.

Other significant contests are the three ballot measures from the 90s that were seen statewide as being racially motivated against Latinos. Proposition 187 (immigrant benefits) 209 (affirmative action), and 227 (English language).

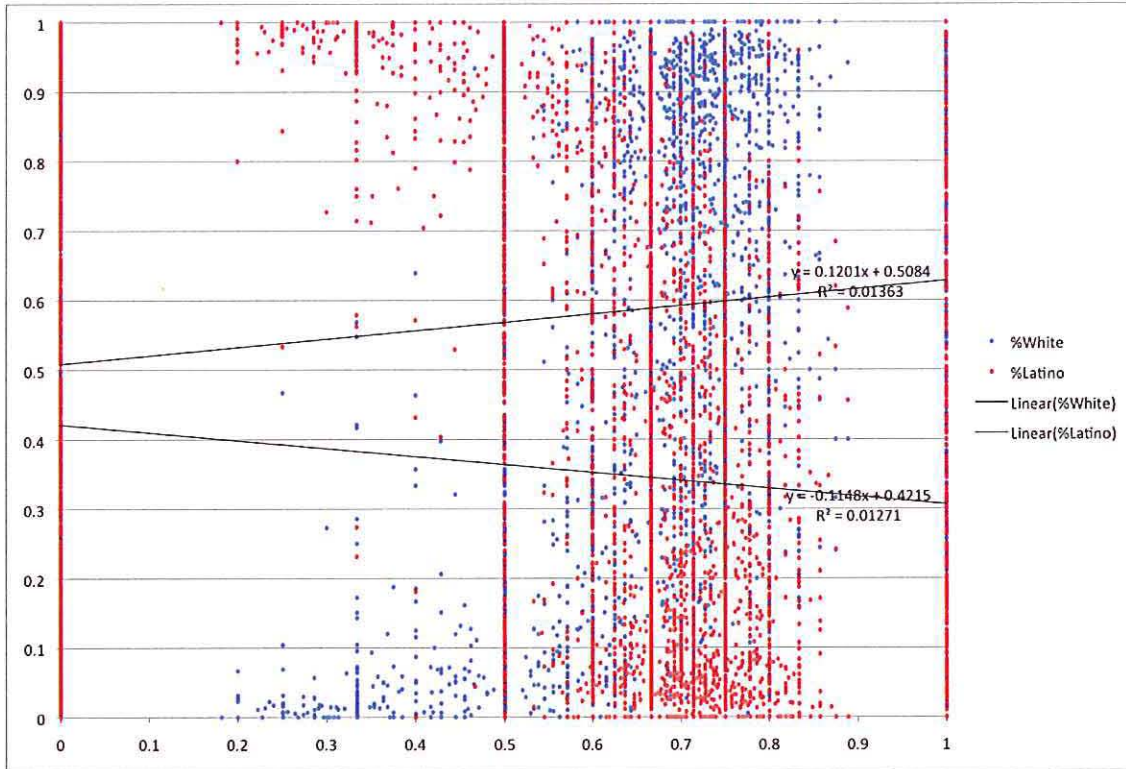
Ballot Measure Scores		
	Latino	White
Prop 187 Yes	$y = -0.1148x + 0.4215$	$y = 0.1201x + 0.5084$
Prop 209 Yes	$y = -0.1425x + 0.4273$	$y = 0.156x + 0.4996$
Prop 227 Yes	$y = -0.2058x + 0.454$	$y = 0.2167x + 0.4739$

Using these formulas, substituting X for 100 provides the following calculations of Latino and White votes for these racially tinged ballot measures.

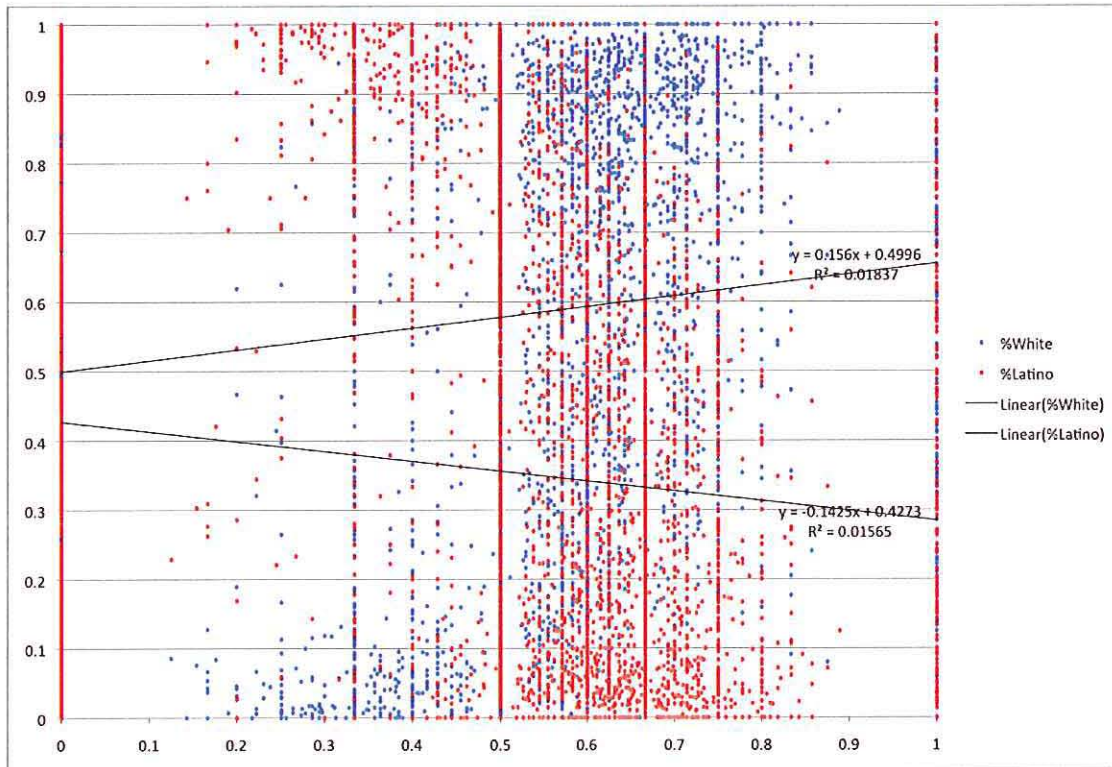
Ballot Measure Calculations		
	Latino	White
Prop 187 Yes	31%	62%
Prop 209 Yes	28%	65%
Prop 227 Yes	25%	70%

This analysis points to the divergent views of Latinos and Whites within the overall district boundaries on three issues that have been used regularly in racially polarized voting analysis. As was mentioned before, the results here are dated, yet they still show significant differences in election choices based on today's population and past votes.

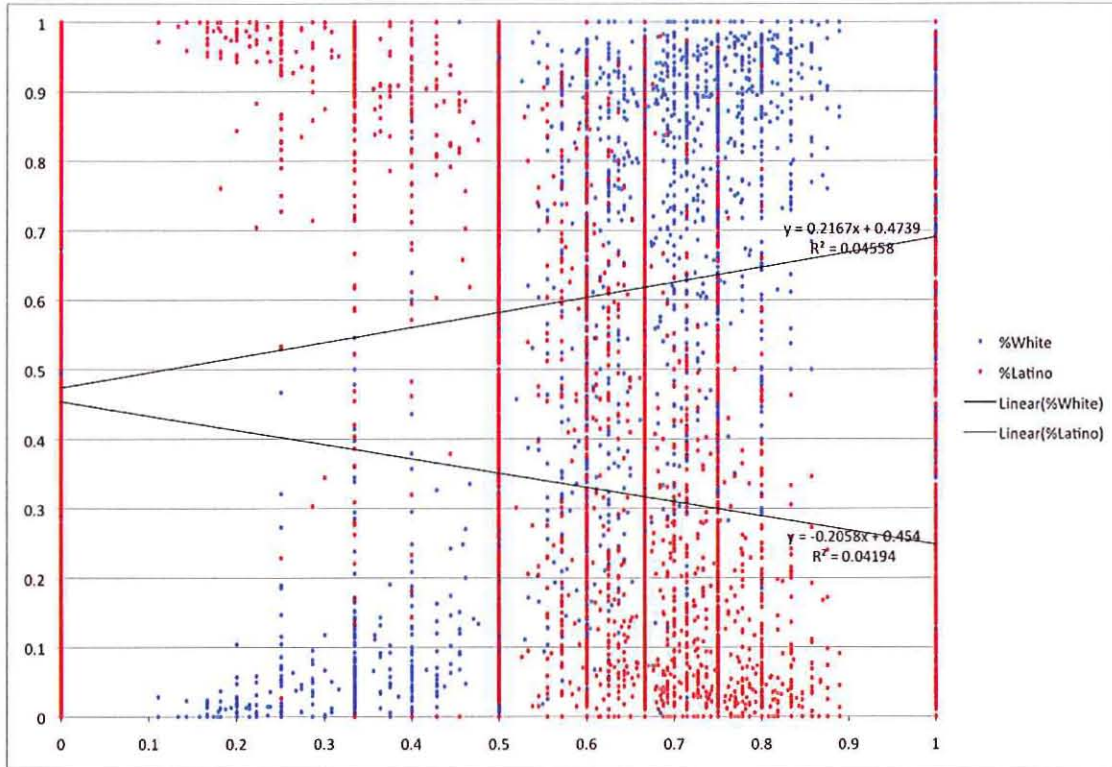
Proposition 187 (Immigrant Benefits)



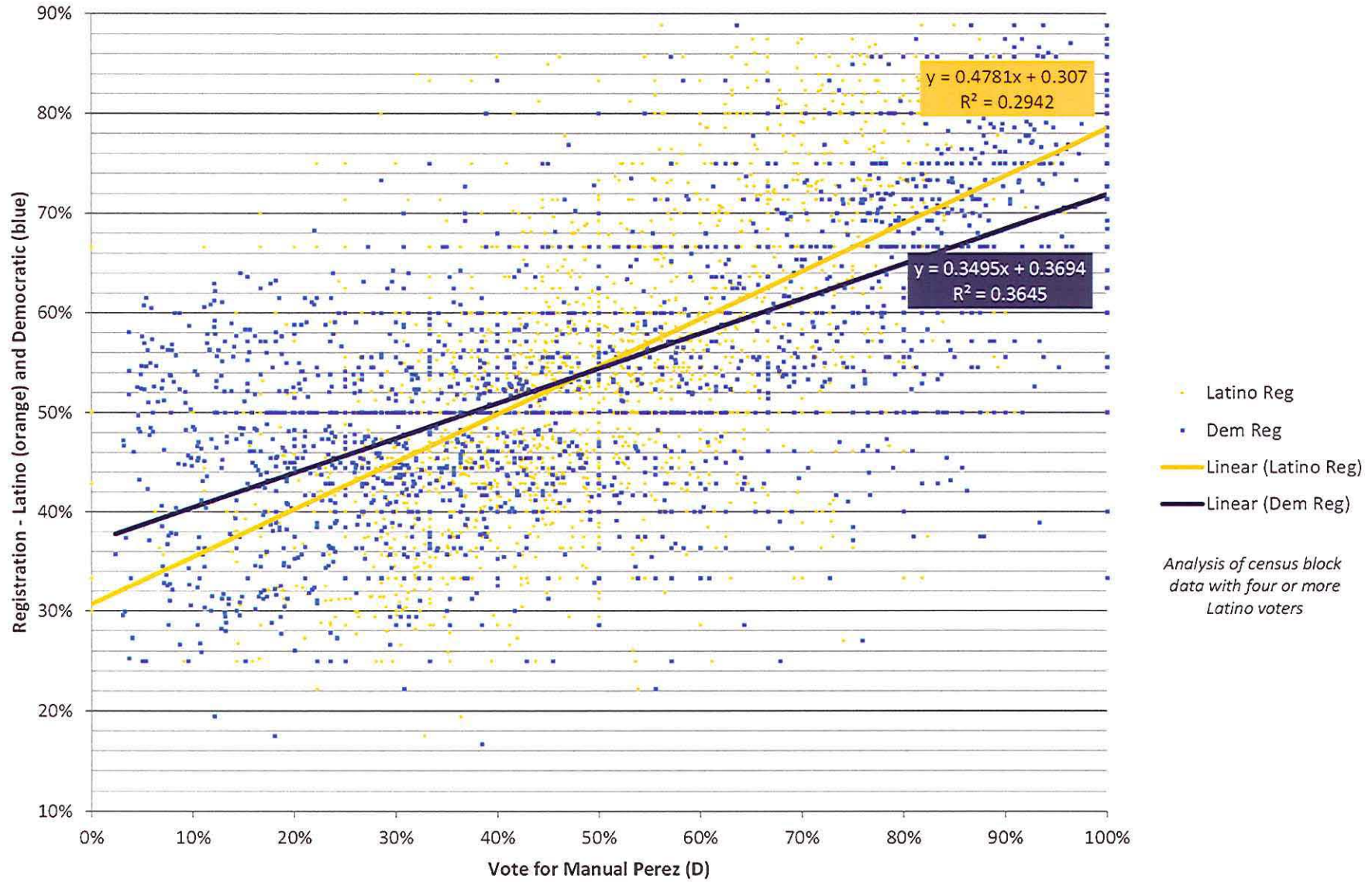
Proposition 209 (Affirmative Action)



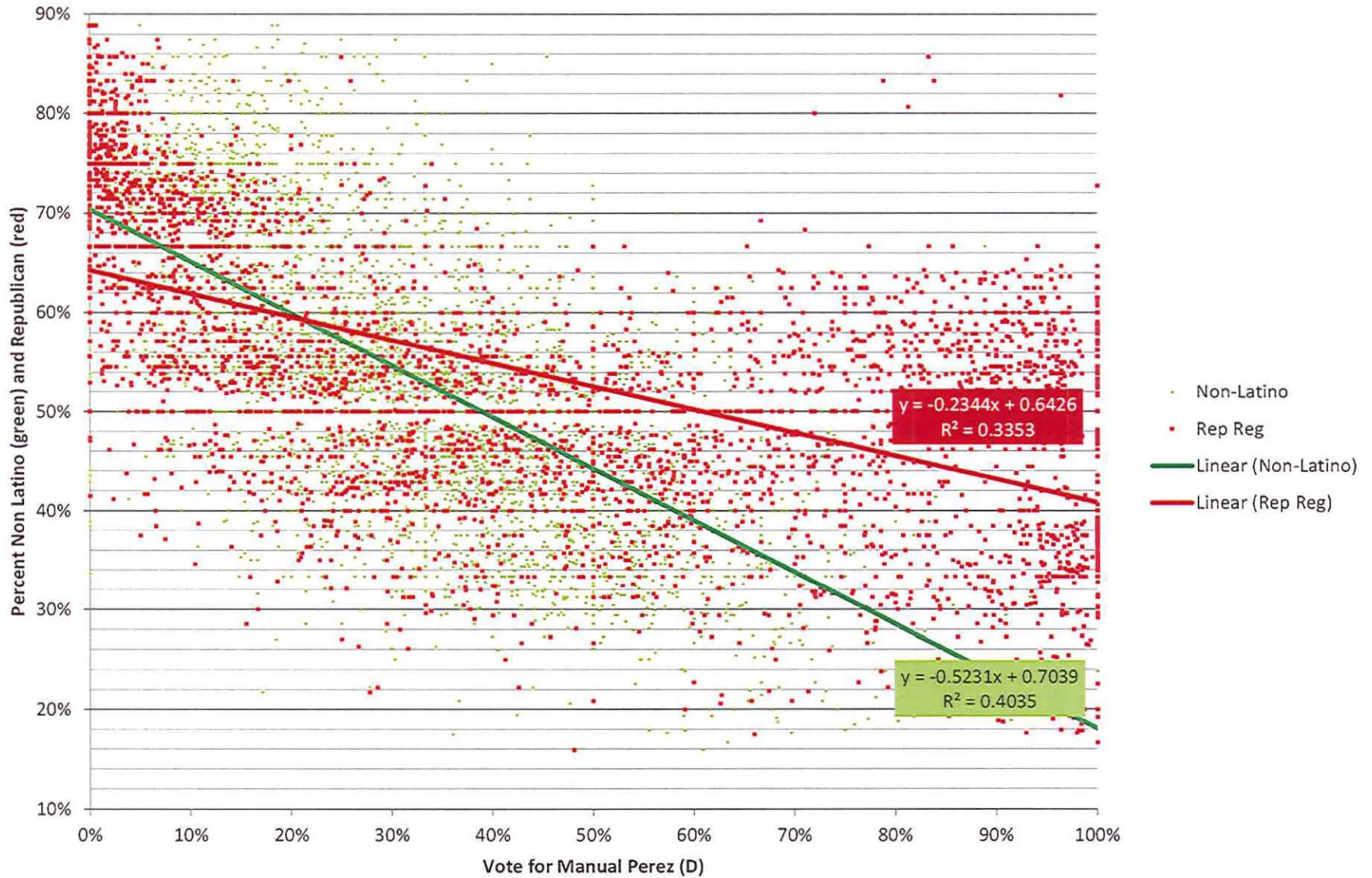
Proposition 227 (English Language)



Manuel Perez (D) v. Gary Jeandron (R)
November, 2008 General Election - College of the Desert Overlay
Latino Registration Stronger Indicator than Democratic Registration



Manuel Perez (D) v. Gary Jeandron (R)
November, 2008 General Election
Non - Latino Stronger Indicator than Republican Registration



Ethnic Voter Influence | Multivariate Regression

In addition to the extensive analysis done by Redistricting Partners, two multivariate ecological regressions which attempt to elucidate the relationships between precinct-level characteristics (economic, party, etc.) and percentage votes for various candidates were subcontracted to researchers from California State University, Northridge.

The strongest correlations to race based on the data provided were found in the contest for Assembly in 2008 and Proposition 187. The attached data tables provide a deep look at the statistical results of the analysis.

The overall message from this analysis is that it confirms both the HPA and simple regression analysis.

Regression Model 2: Proposition 187 Parameters for Multivariate Ecological Regression Analysis	187 Yes Coefficients	187 Yes T-Scores	187 Yes Probabilities	187 No Coefficients	187 No T-Scores	187 No Probabilities
Ethnicity						
Percent Latino Voters	0.15800	1.85000	0.065	0.21600	2.92000	0.004
Percent White Voters	0.26900	3.50000	0.001	0.10100	1.52000	0.130
Party Affiliation						
Percent Democrat Voters	-1.55800	-3.34000	0.001	1.25200	3.10000	0.002
Percent Republican Voters	-1.14300	-2.45000	0.015	0.68200	1.69000	0.092
Percent DTS Voters	-1.27000	-2.33000	0.021	0.95400	2.02000	0.044
Nativity						
Percent Mexican Born	0.12100	0.43000	0.665	0.05660	0.24000	0.814
Percent Native Born	-0.04320	-0.89000	0.372	0.09320	2.23000	0.026
Percent Foreign Born	-0.52800	-1.96000	0.050	0.20000	0.86000	0.389
Constant	185.00000	4.08000	0.000	-86.56000	-2.21000	0.028
Adjusted R-Squared	0.56760			0.64310		

Regression Model 3: Proposition 187 Parameters for Multivariate Ecological Regression Analysis -	187 Yes Coefficients	187 Yes T-Scores	187 Yes Probabilities	187 No Coefficients	187 No T-Scores	187 No Probabilities
Ethnicity						
Percent Latino Voters	0.16300	1.89000	0.061	0.21700	2.93000	0.004
Percent White Voters	0.27100	3.43000	0.001	0.08610	1.27000	0.205
Party Affiliation						
Percent Democrat Voters	-1.59400	-3.19000	0.002	1.24000	2.88000	0.004
Percent Republican Voters	-1.13000	-2.22000	0.027	0.60800	1.39000	0.164
Percent DTS Voters	-1.22900	-2.16000	0.032	0.83900	1.71000	0.088
Nativity						
Percent Mexican Born	0.05580	0.20000	0.845	0.16600	0.68000	0.499
Percent Native Born	-0.01430	-0.24000	0.808	0.05650	1.12000	0.265
Percent Foreign Born	-0.45100	-1.63000	0.104	0.07070	0.30000	0.766
Economic Indicators						
Percent College Graduates	-0.00648	-0.06000	0.948	0.09770	1.14000	0.256
Mean Household Income	-0.00005	-1.05000	0.296	0.00003	0.90000	0.367
Constant	185.80000	3.88000	0.000	-81.35000	-1.98000	0.049
Adjusted R-Squared	0.56680			0.64690		

Analysis by Regan M. Maas, PhD, California State University Northridge

Regression Model 2: Assembly 2008 Parameters for Multivariate Ecological Regression Analysis	Perez v. Jeandron Coefficients	Perez v. Jeandron T-Scores	Perez v. Jeandron Probabilities	Perez v. Jeandron Coefficients	Perez v. Jeandron T-Scores	Perez v. Jeandron Probabilities
Ethnicity						
Percent Latino Voters	0.09930	1.68000	0.094	-0.00764	-0.13000	0.894
Percent White Voters	0.15000	2.81000	0.005	-0.04210	-0.82000	0.415
Party Affiliation						
Percent Democrat Voters	0.61900	1.85000	0.065	-0.11500	-0.36000	0.722
Percent Republican Voters	-0.27800	-0.84000	0.404	0.66000	2.04000	0.042
Percent DTS Voters	-0.00934	-0.02000	0.981	0.57500	1.55000	0.122
Nativity						
Percent Mexican Born	-0.29100	-1.51000	0.132	0.06280	0.34000	0.737
Percent Native Born	-0.17900	-4.97000	0.000	-0.15800	-4.52000	0.000
Percent Foreign Born	0.43800	2.35000	0.020	-0.54000	-2.99000	0.003
Constant	29.63000	0.93000	0.356	41.82000	1.35000	0.179

Adjusted R-Squared

0.74620

0.75010

Regression Model 3: Assembly 2008 Parameters for Multivariate Ecological Regression Analysis -	Perez v. Jeandron Coefficients	Perez v. Jeandron T-Scores	Perez v. Jeandron Probabilities	Perez v. Jeandron Coefficients	Perez v. Jeandron T-Scores	Perez v. Jeandron Probabilities
Ethnicity						
Percent Latino Voters	0.06240	1.17000	0.243	-0.04950	-1.00000	0.317
Percent White Voters	0.11700	2.40000	0.017	-0.09600	-2.12000	0.035
Party Affiliation						
Percent Democrat Voters	0.41800	1.35000	0.178	-0.42200	-1.47000	0.142
Percent Republican Voters	-0.42000	-1.34000	0.183	0.40000	1.37000	0.171
Percent DTS Voters	-0.17200	-0.49000	0.626	0.27000	0.83000	0.409
Nativity						
Percent Mexican Born	-0.25300	-1.43000	0.153	0.20300	1.24000	0.216
Percent Native Born	-0.03560	-0.98000	0.330	-0.00436	-0.13000	0.897
Percent Foreign Born	0.54200	3.18000	0.002	-0.51000	-3.23000	0.001
Economic Indicators						
Percent College Graduates	-0.07950	-1.29000	0.200	0.04020	0.70000	0.483
Mean Household Income	0.00000	0.08000	0.940	-0.00001	-0.39000	0.698
Constant	0.56680			0.64690		

Adjusted R-Squared

Analysis by Regan M. Maas, PhD, California State University Northridge

Creating Influence or Majority Minority Seats

The finding of racially polarized voting is a key factor in CVRA, but a district’s true vulnerability under the law comes when this voting behavior can be remedied through districted elections that provide greater opportunity for the disaffected minority group.

Several versions of districts were drawn in order to determine the ability to use traditional redistricting principles to create either Majority Minority or Influence Latino districts. In each version the line-drawing, using the existing districts as an initial guide, provided for both Majority Minority and Influence Latino seats.

With any of these redistricting plans or a similar configuration the district would be completely free of any vulnerability under the California Voting Rights Act and meet all federal Voting Rights Act Section 2 requirements.

Current At Large System

The current system of at-large elections dilutes the strength of the Latino population, allowing candidates to run in an electorate in which Latinos are only 17% of the eligible voters.

Population	Latino		Latino CVAP	
422,360	218,028	52%	73,353	29%

	Population	Deviation	
1	118,063	32,498	+38%
2	86,695	1,130	+1%
3	67,089	(18,476)	-22%
4	68,998	(16,567)	-19%
5	81,515	(4,050)	-5%

If the current at-large system was converted to by-area elections without any change to the lines the result would provide for a majority-minority Latino district. However, these lines have a population deviation far in excess of current accepted standards of 5% above or below the mean.

By-Area Systems

In order to determine the impacts of potential district lines the following options were explored:

Option A – One majority-minority seat.

	Population	Latino		Latino CVAP	
1	84,918	29,892	35%	10,725	20%
2	85,559	42,348	49%	12,513	26%
3	84,032	45,038	54%	10,534	23%
4	84,074	26,663	32%	12,987	20%
5	83,777	74,087	88%	26,594	69%

Option B – One majority-minority and one near majority-minority seat.

	Population	Latino		Latino CVAP	
1	85,157	65,465	77%	19,614	49%
2	85,120	35,058	41%	10,587	20%
3	85,131	35,486	42%	11,865	21%
4	84,612	20,227	24%	7,739	12%
5	82,340	61,792	75%	23,548	59%

Option C – One majority-minority seat

	Population	Latino		Latino CVAP	
1	85,780	43,023	50%	9,847	21%
2	86,695	42,762	49%	12,656	26%
3	82,630	28,470	34%	10,896	19%
4	84,066	30,857	37%	13,552	22%
5	83,189	72,916	88%	26,402	69%

Option D – One majority-minority and one Latino-influence seat.

	Population	Latino		Latino CVAP	
1	84,139	75,760	90%	17,867	67%
2	84,714	36,850	43%	10,889	23%
3	86,439	36,806	43%	11,905	21%
4	85,527	23,345	27%	10,747	16%
5	81,541	45,267	56%	21,945	40%

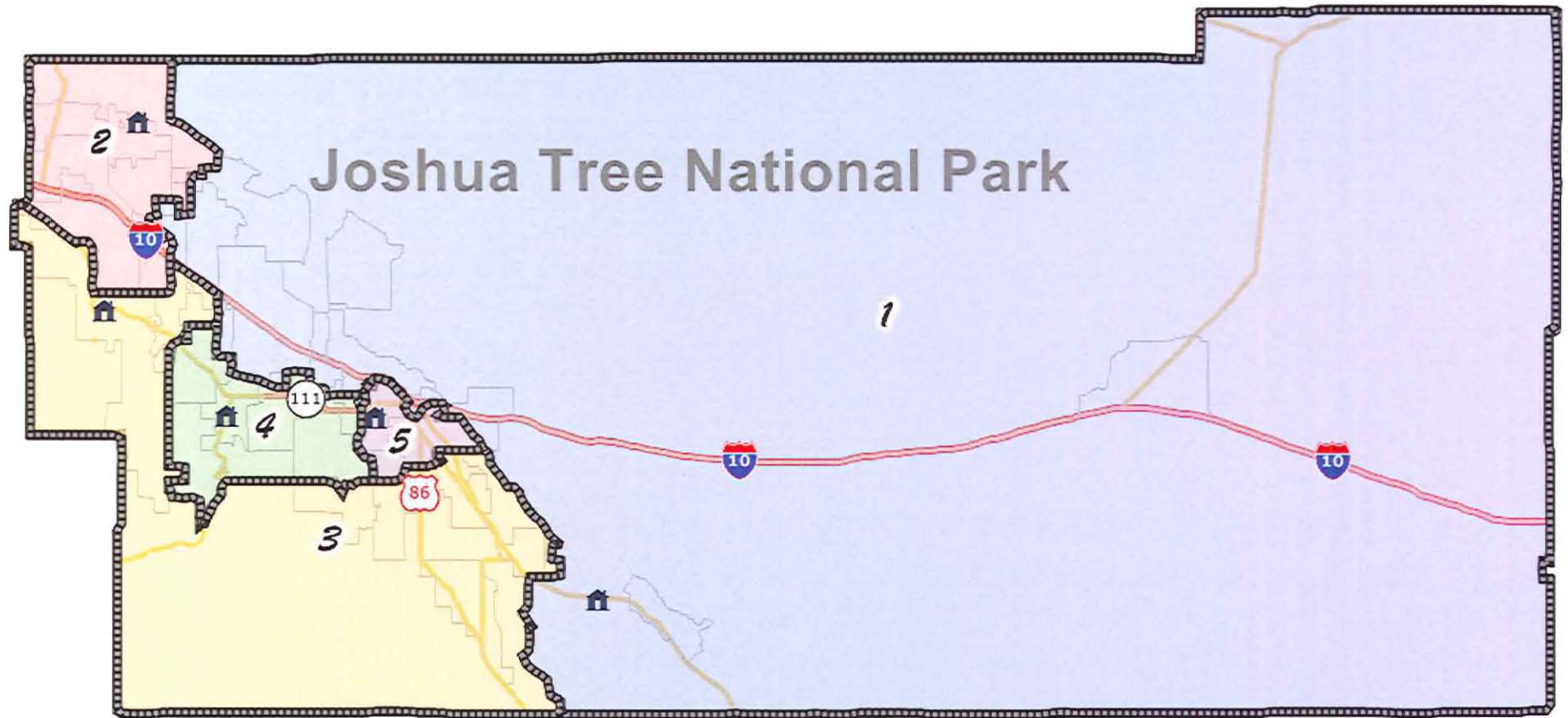
Results of Analysis

The analysis using these limited statewide contests provides a compelling basis for determining racially polarized voting, drawing lines that would resolve state or federal voting rights act issues, and a recommendation that the district transition to a by-area election system.

Analysis of local elections was inhibited by the inability of the Riverside County Registrar to provide usable data on city council, school board and other municipal elections. While this could have been useful, research in racially polarized voting generally points to the increased racial polarization in local contest where less information is available to voters and more weight is given to surnames as a shortcut for voter preference. This is particularly true in non-partisan contests.

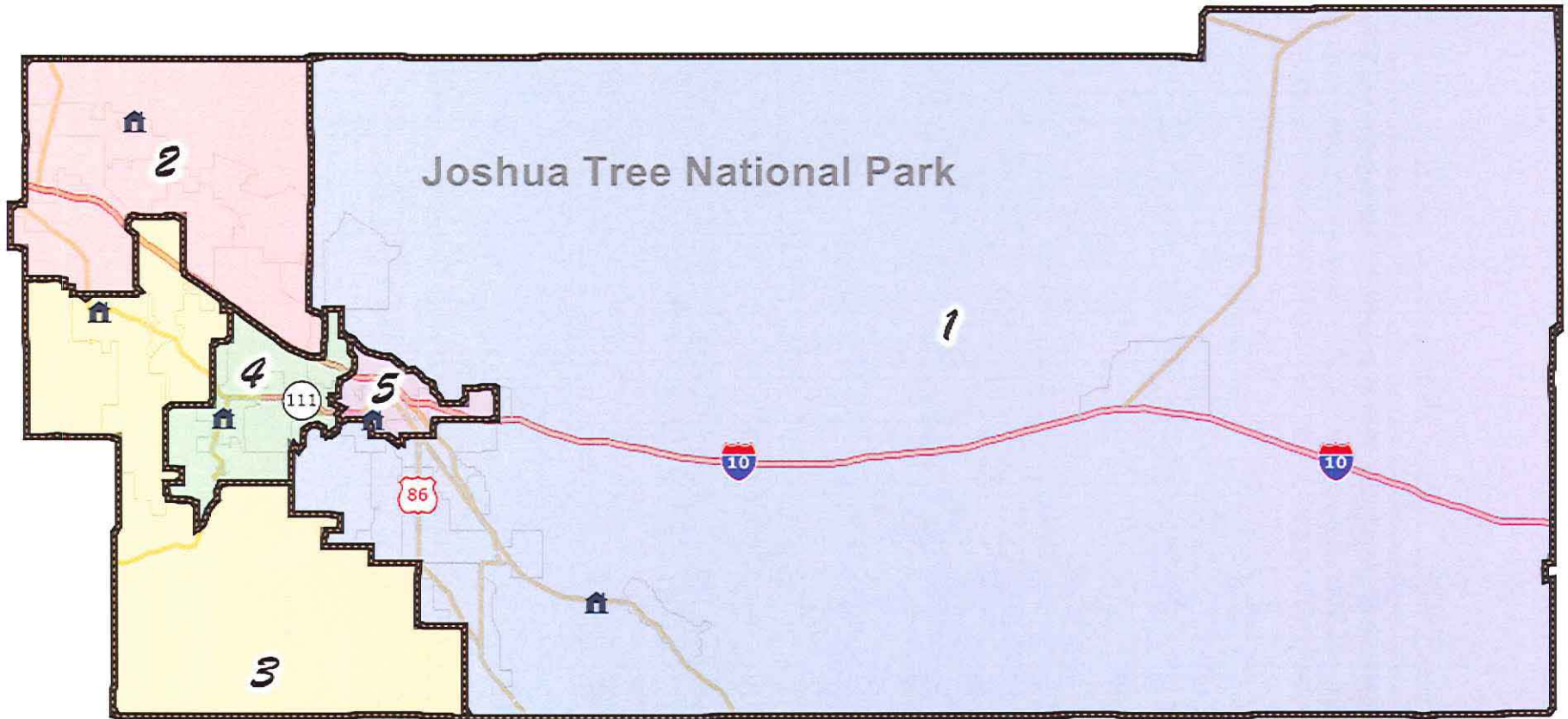
Redistricting Partners and the Community College League are ready to assist the district in determining appropriate new lines using these four draft plans as a guide and working with the district's counsel and staff to complete the redistricting process and transition to by-area elections if that is the choice of the board.

Option A



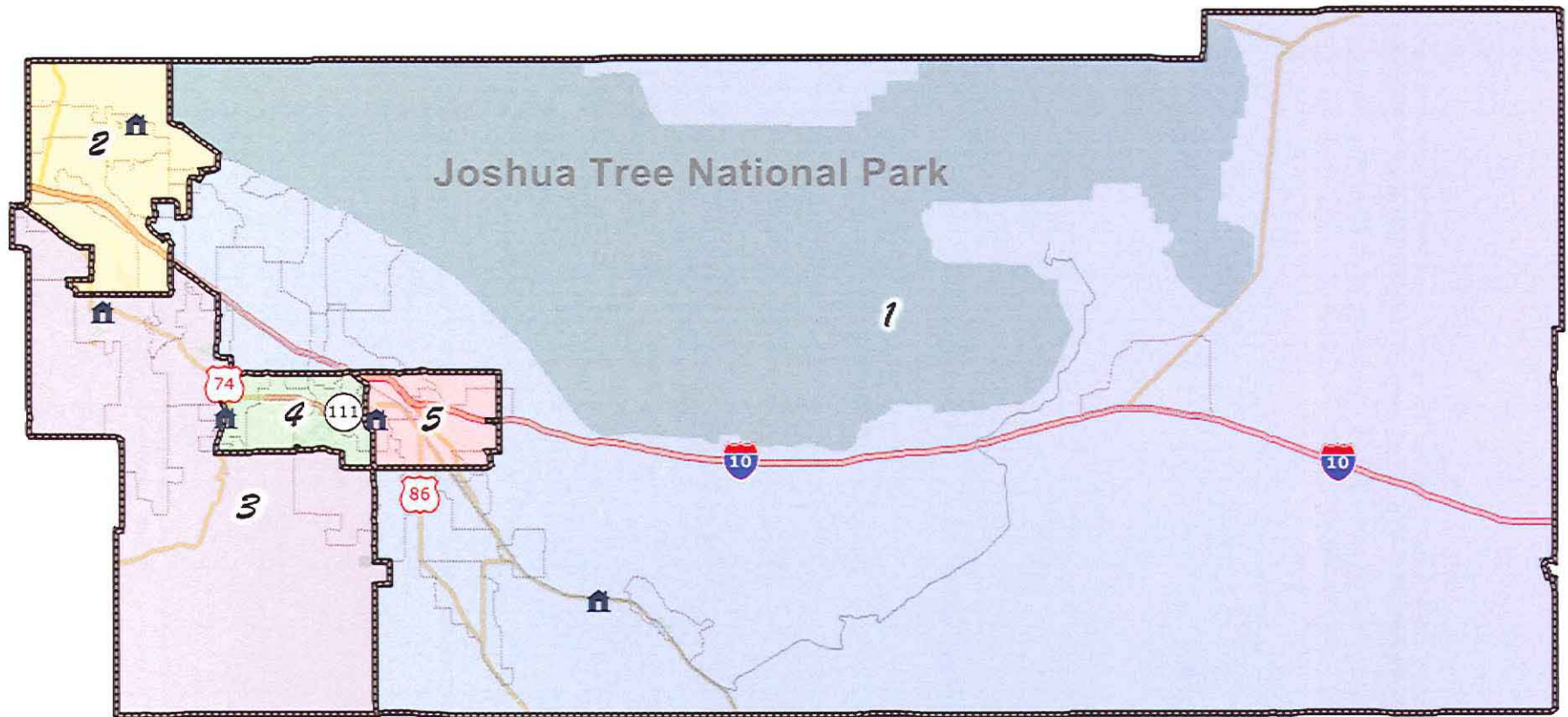
	Population	Latino		Latino CVAP	
1	84,918	29,892	35%	10,725	20%
2	85,559	42,348	49%	12,513	26%
3	84,032	45,038	54%	10,534	23%
4	84,074	26,663	32%	12,987	20%
5	83,777	74,087	88%	26,594	69%

Option B



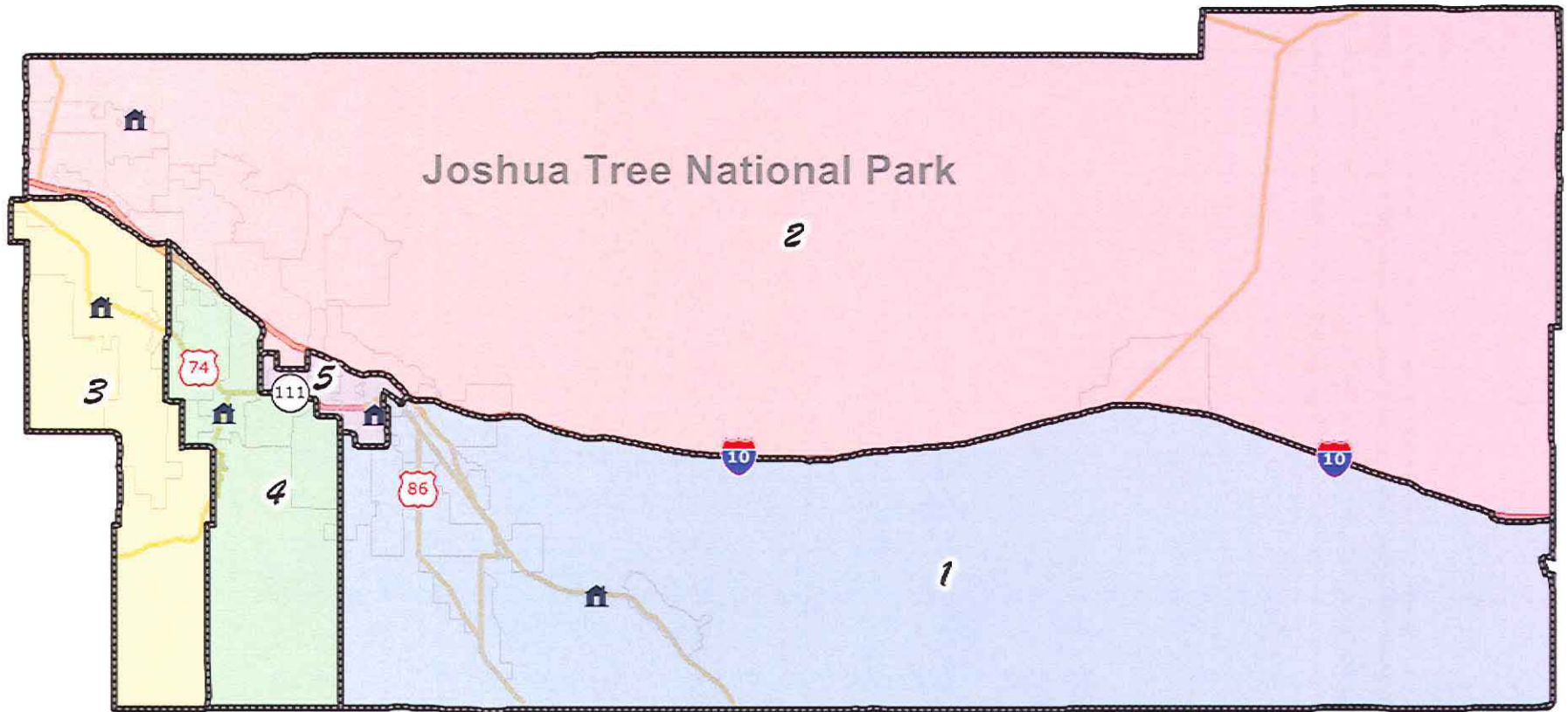
	Population	Latino		Latino CVAP	
1	85,157	65,465	77%	19,614	49%
2	85,120	35,058	41%	10,587	20%
3	85,131	35,486	42%	11,865	21%
4	84,612	20,227	24%	7,739	12%
5	82,340	61,792	75%	23,548	59%

Option C



	Population	Latino		Latino CVAP	
1	85,780	43,023	50%	9,847	21%
2	86,695	42,762	49%	12,656	26%
3	82,630	28,470	34%	10,896	19%
4	84,066	30,857	37%	13,552	22%
5	83,189	72,916	88%	26,402	69%

Option D



	Population	Latino		Latino CVAP	
1	84,139	75,760	90%	17,867	67%
2	84,714	36,850	43%	10,889	23%
3	86,439	36,806	43%	11,905	21%
4	85,527	23,345	27%	10,747	16%
5	81,541	45,267	56%	21,945	40%



Community College
League of California



Redistricting, 2011

College of the Desert

Analysis of Voting Behavior and
application of State/Federal voting
rights acts

What is CVRA Analysis

definition

CVRA Analysis is the process of determining the requirements for districts under the California Voting Rights Act. This analysis includes:

- Review of past elections, board composition, overall ethnic makeup of the district.
- Analysis of key ballot measure and candidate races to determine the existence of and severity of RPV.
- Drawing of potential district lines to see if districts can be created that are Majority-Minority (Federal VRA) or Influence (State CVRA)

Review of District

Ethnic, electoral, historic

Desert Community College District displays many characteristics that make it a likely target for CVRA review.

- The Latino population is large and densely populated in specific regions.
- Latinos have grown as a portion of the overall population – and for the first time in the district’s history the majority ethnic group is Latino.
- The board has not had significant turnover and all of the trustees are non-Latino.

Racially Polarized Voting

findings

Redistricting Partners conducted an extensive review of election results for candidates and ballot measures. The final analysis provided to the board shows significant RPV.

Analysis of homogenous precincts provided samples of over 130,000 Latinos and 150,000 Whites whose election results could be disaggregated from overall totals. This found:

- Wide variation in registration and participation in elections.
- Significant evidence of polarized voting on ballot measures that impacted Latinos.
- Major differences in election results for state office candidates when one was Latino.

What is CVRA Analysis

definition

CVRA Analysis is the process of determining the requirements for districts under the California Voting Rights Act. This analysis includes:

- Review of past elections, board composition, overall ethnic makeup of the district.
- Analysis of key ballot measure and candidate races to determine the existence of and severity of RPV.
- Drawing of potential district lines to see if districts can be created that are Majority-Minority (Federal VRA) or Influence (State CVRA)

Traditional Redistricting Principles

Should be followed by Community College Districts

There are a number of criteria that have been used nationally and upheld by courts.

- **Relatively equal size - people, not citizens**
- *Contiguous* – districts should not hop/jump
- Maintain *communities of interest*
- Follow city/county/local government lines
- Keep districts *compact* – appearance/function
- Preserving voter choices (incumbents)

Current District Lines

Equal Size Districts

	<u>Population</u>	<u>Deviation</u>		Goal Population
1	118,063	32,498	+38%	84,472
2	86,695	1,130	+1%	Safe High
3	67,089	(18,476)	-22%	88,695
4	68,998	(16,567)	-19%	
5	81,515	(4,050)	-5%	Safe Low
				80,248

Current District Lines

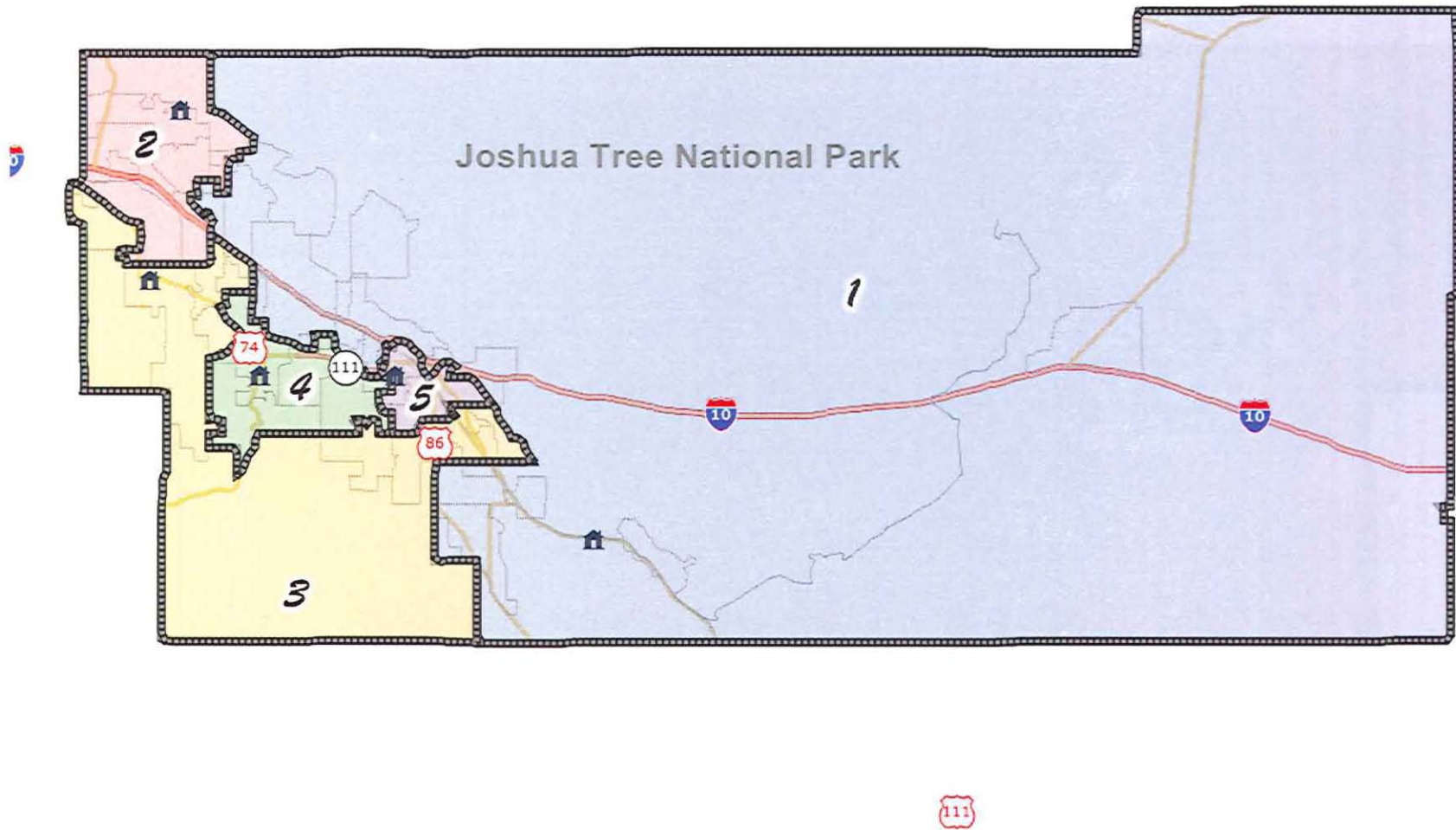
Latino Population

	Latino Population		Latino CVAP	
1	55,585	47%	16,610	24%
2	42,762	49%	12,656	26%
3	27,349	41%	8,969	20%
4	19,723	29%	9,416	18%
5	72,609	89%	25,702	71%

The CVRA requires that districts be drawn to provide for minority *influence* seats.

The VRA requires, where possible, the creation of *majority minority* seats.

Current District Lines





Option A

Minimal Change

This Plan creates minimal changes, only adjusting current lines for population. As such it:

- Gets all districts within 1% from the mean on population variation.
- Creates one Majority-Minority district.

Option A



Latino		CVAP Latino	
29,892	35%	10,725	20%
42,348	49%	12,513	26%
45,038	54%	10,534	23%
26,663	32%	12,987	20%
74,087	88%	26,594	69%

Option B



District	Population	Deviation	
1	85,157	685	1%
2	85,120	648	1%
3	85,131	659	1%
4	84,612	140	0%
5	82,340	(2,132)	-3%





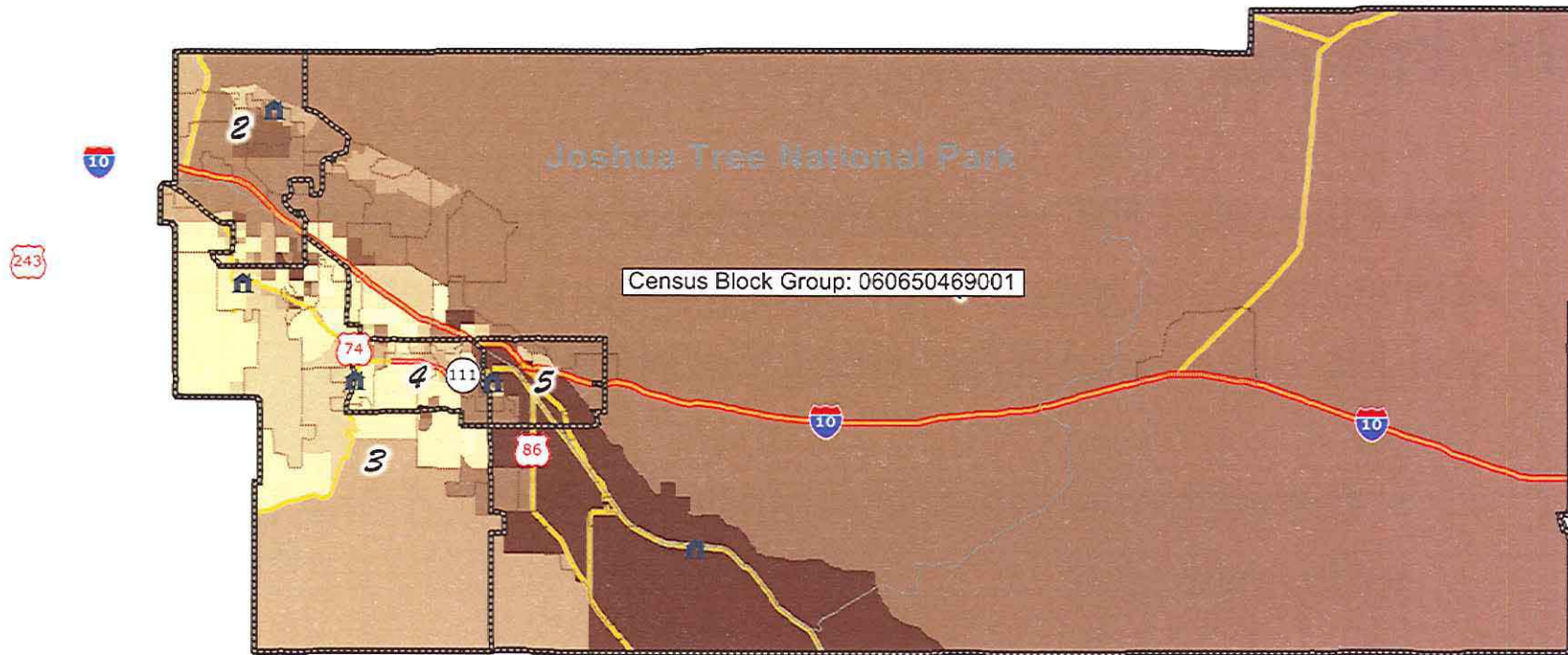
Option C

Minimal Change

This Plan uses the current framework for the districts but seeks to create more compact and visually appealing districts.

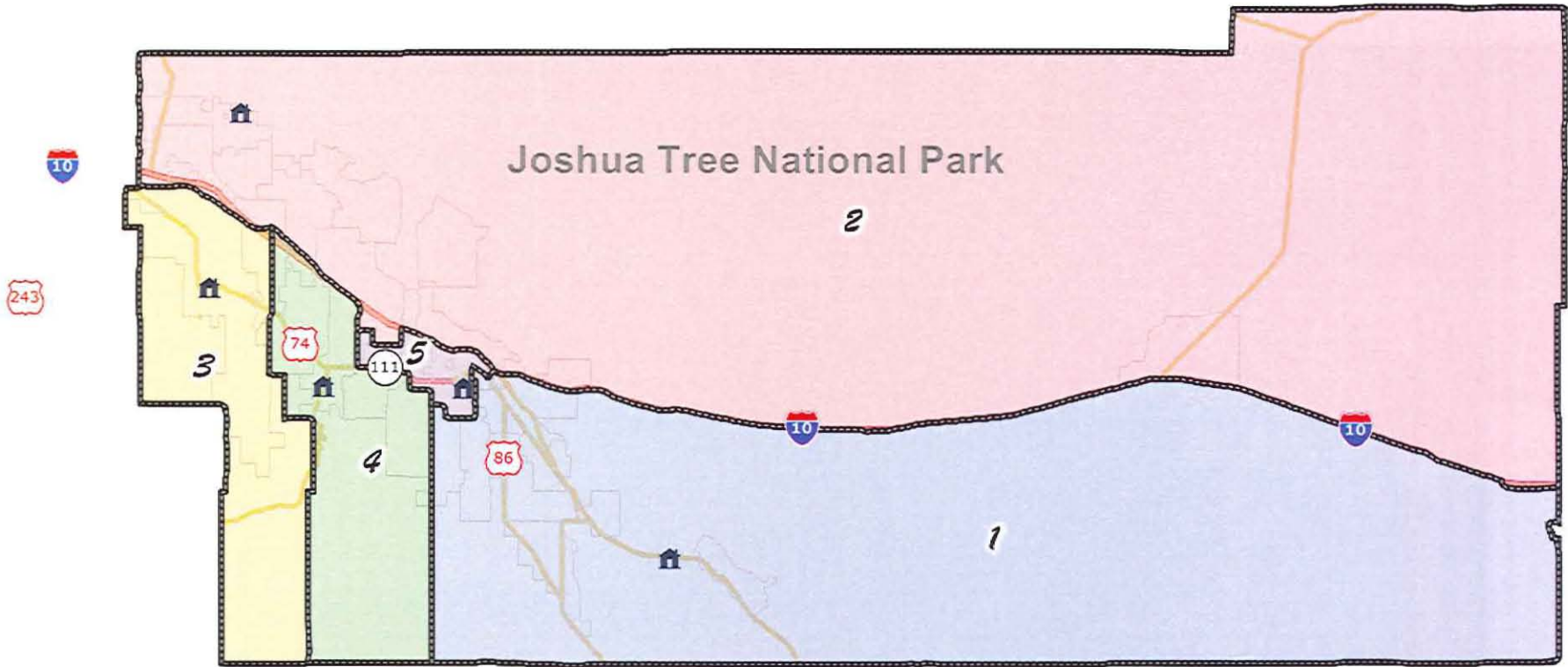
- Creates one *majority-minority* seat.
- Achieves a secondary goal of making districts that are more compact and have clean lines.

Option C



Latino		CVAP Latino	
43,023	50%	9,847	21%
42,762	49%	12,656	26%
28,470	34%	10,896	19%
30,857	37%	13,552	22%
72,916	88%	26,402	69%

Option D

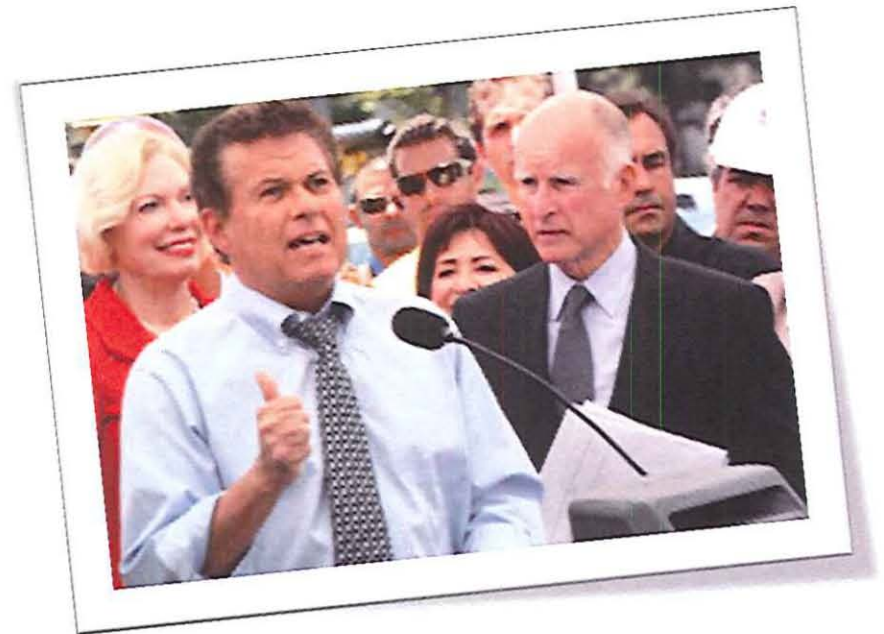


	Population	Population	Deviation	
1	84,139		-333	-0.40%
2	84,714		242	0.29%
3	86,439		1,967	2.28%
4	85,527		1,055	1.23%
5	81,541		-2,931	-3.59%

League Sponsored Legislation

Making it easier for colleges to transition

The Community College League is sponsoring **AB 684 (Block)** which would authorize governing boards to change election systems with oversight by the Board of Governors.





COLLEGE OF THE DESERT

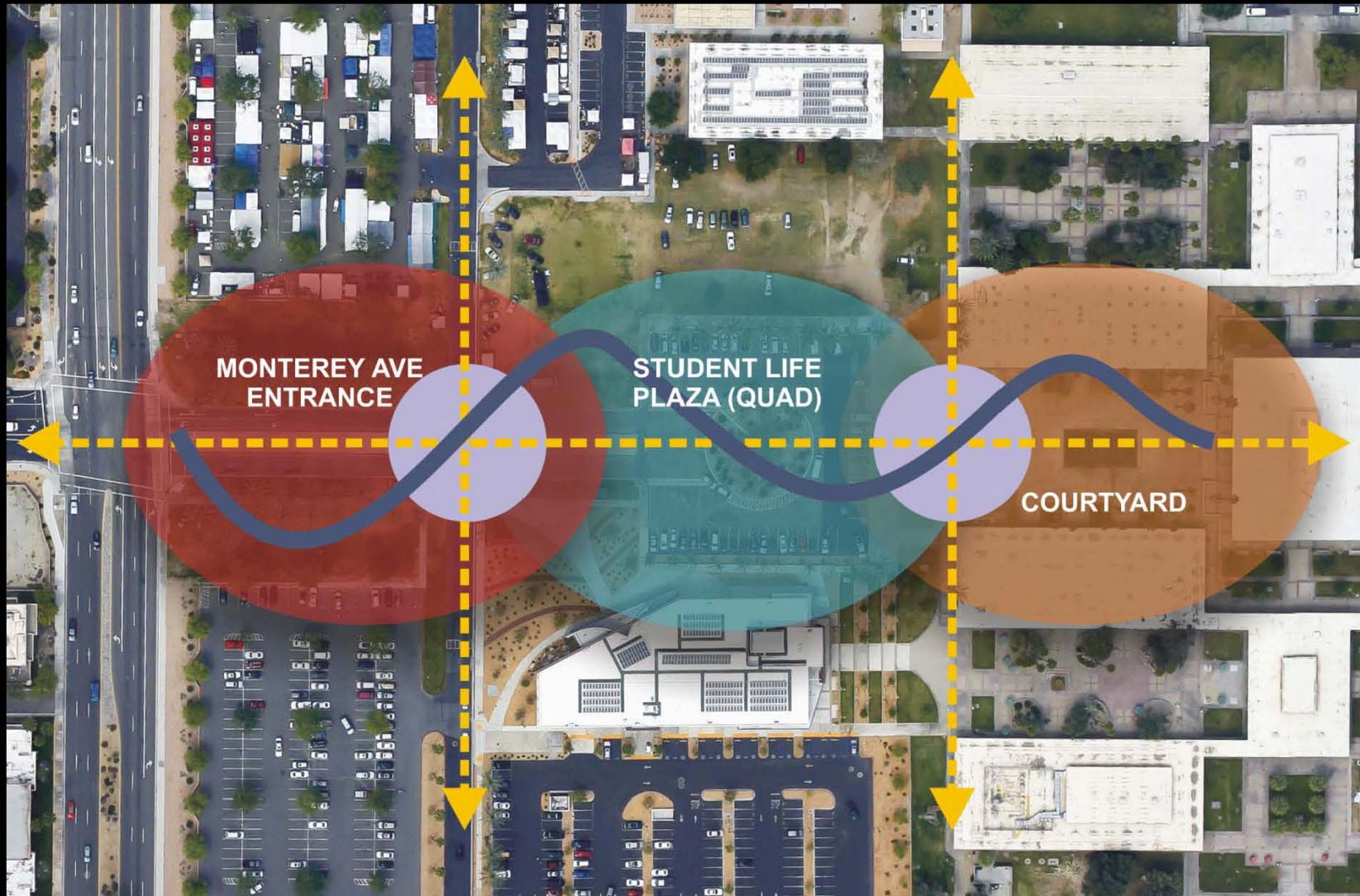
OPENING THE DOOR...



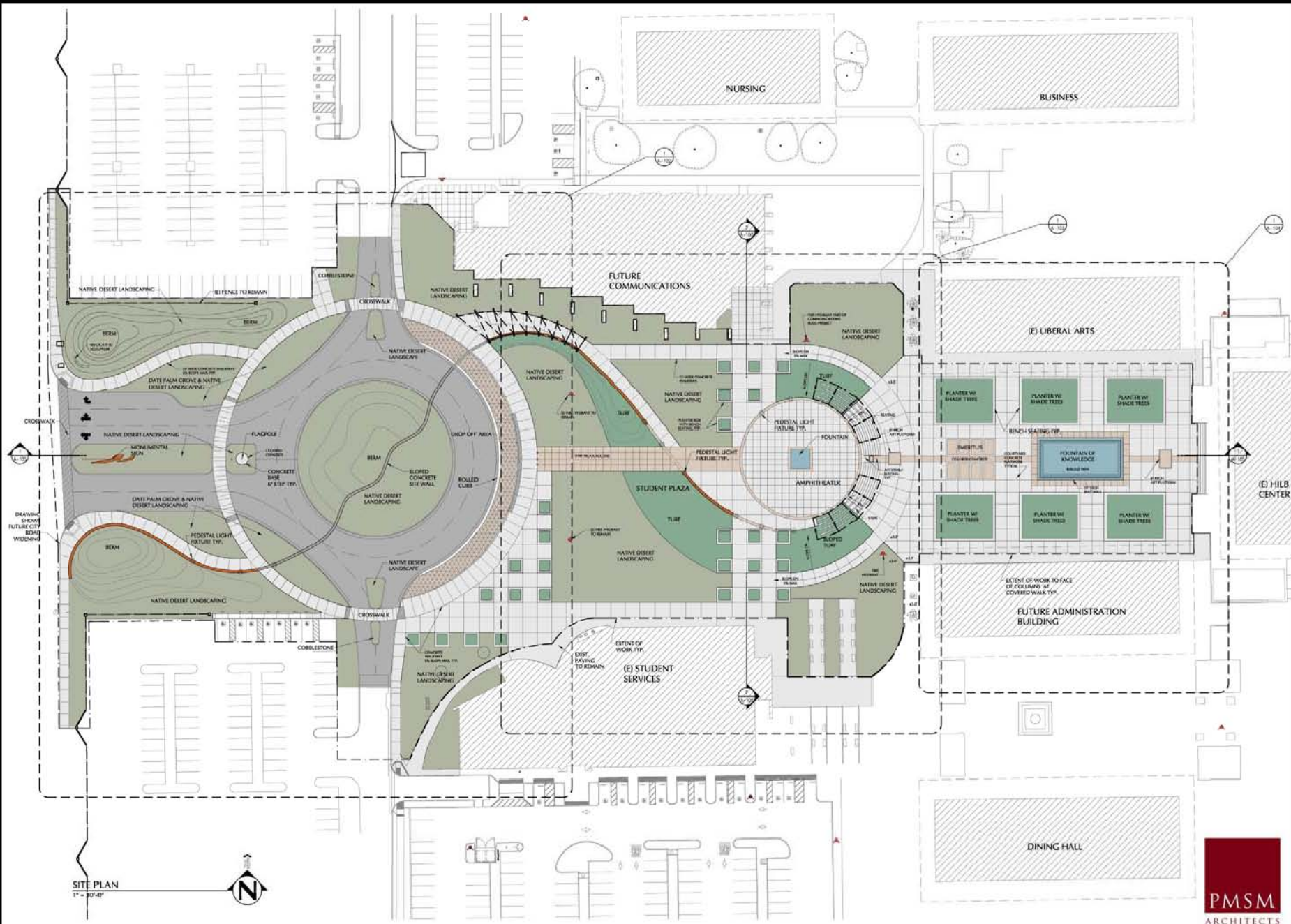
MONTEREY AVE ENTRANCE PROJECT AUGUST 19, 2011

SCHEMATIC DESIGN

PMSM
ARCHITECTS



The purpose of this project is to create a **COHESIVE CAMPUS-WIDE THREAD** between the eclectic nature of the original campus buildings and the new architectural styles.



SITE PLAN
1" = 30'-0"





BIRDS-EYE VIEW



VIEW FROM MONTEREY AVE



VIEW FROM PARK VIEW



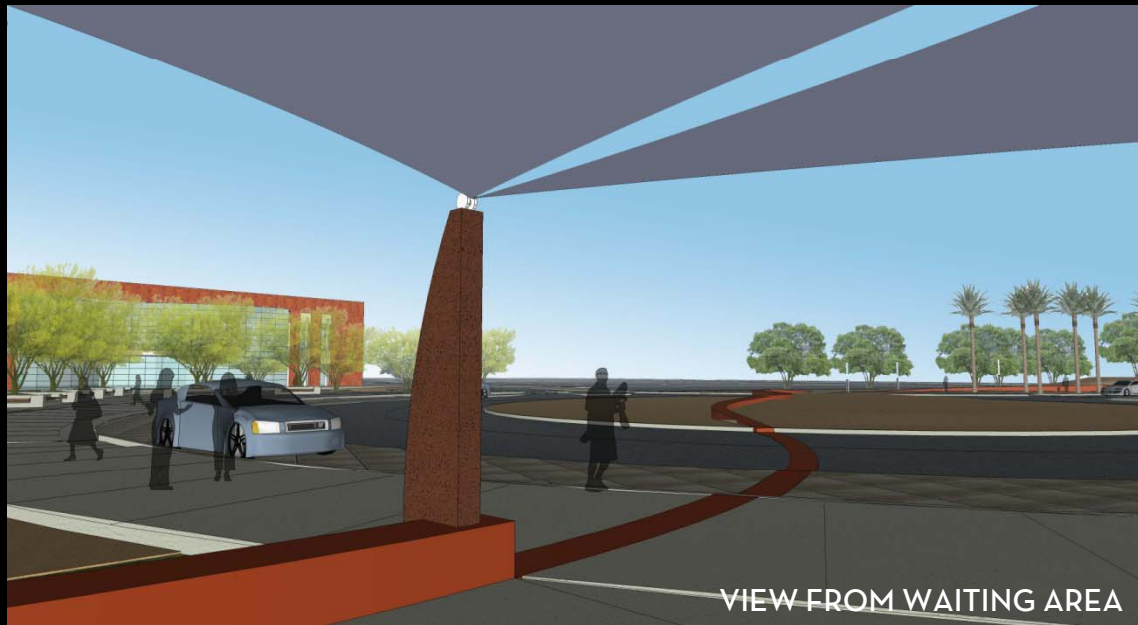
VIEW FROM MONTEREY AVE



VIEW FROM ENTRY DRIVE



VIEW FROM TRAFFIC CIRCLE





VIEW FROM WAITING AREA



VIEW FROM STUDENT SERVICES



VIEW FROM STUDENT DROP-OFF



VIEW FROM STUDENT DROP-OFF



BIRDS-EYE VIEW



VIEW FROM AMPHITHEATER



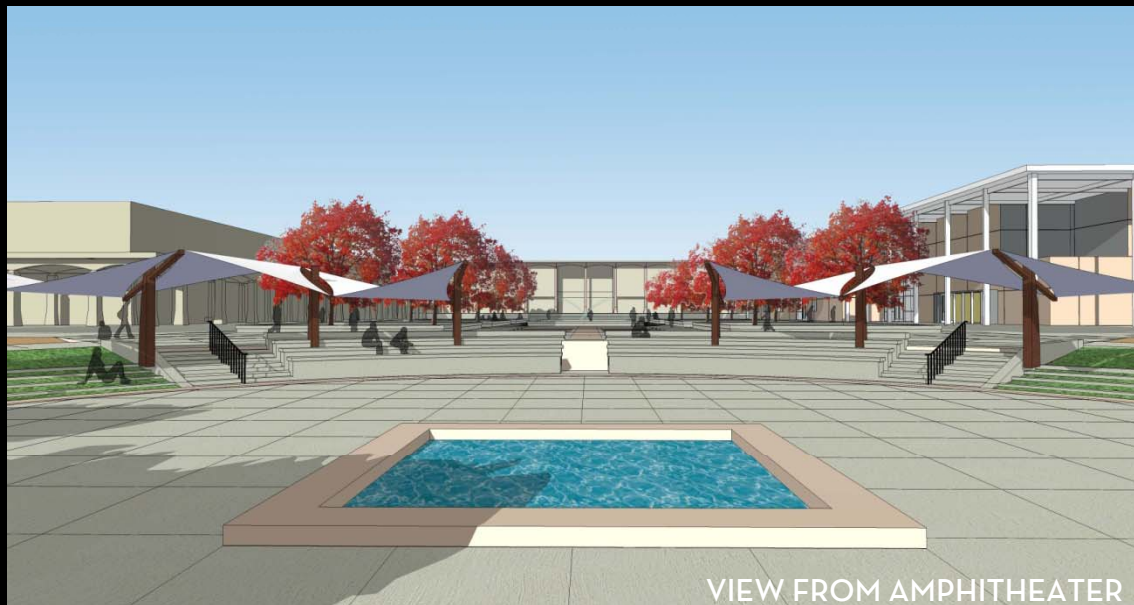
VIEW FROM COMMUNICATIONS BUILDING



VIEW FROM STUDENT SERVICES



VIEW FROM COMMUNICATIONS BUILDING



VIEW FROM AMPHITHEATER



VIEW FROM HILB BUILDING



VIEW FROM COURTYARD



Fee Payment Deadline

Adrian Gonzales

Interim Vice President, Student Affairs

COD Board of Trustees Study Session

August 19, 2011

Historical Perspective

Term	Fee Deadline
Fall 2007 and earlier	Varied Dates
Fall 2008	10 days
Fall 2009	5 days
Fall 2010	3 days
Fall 2011	3 days



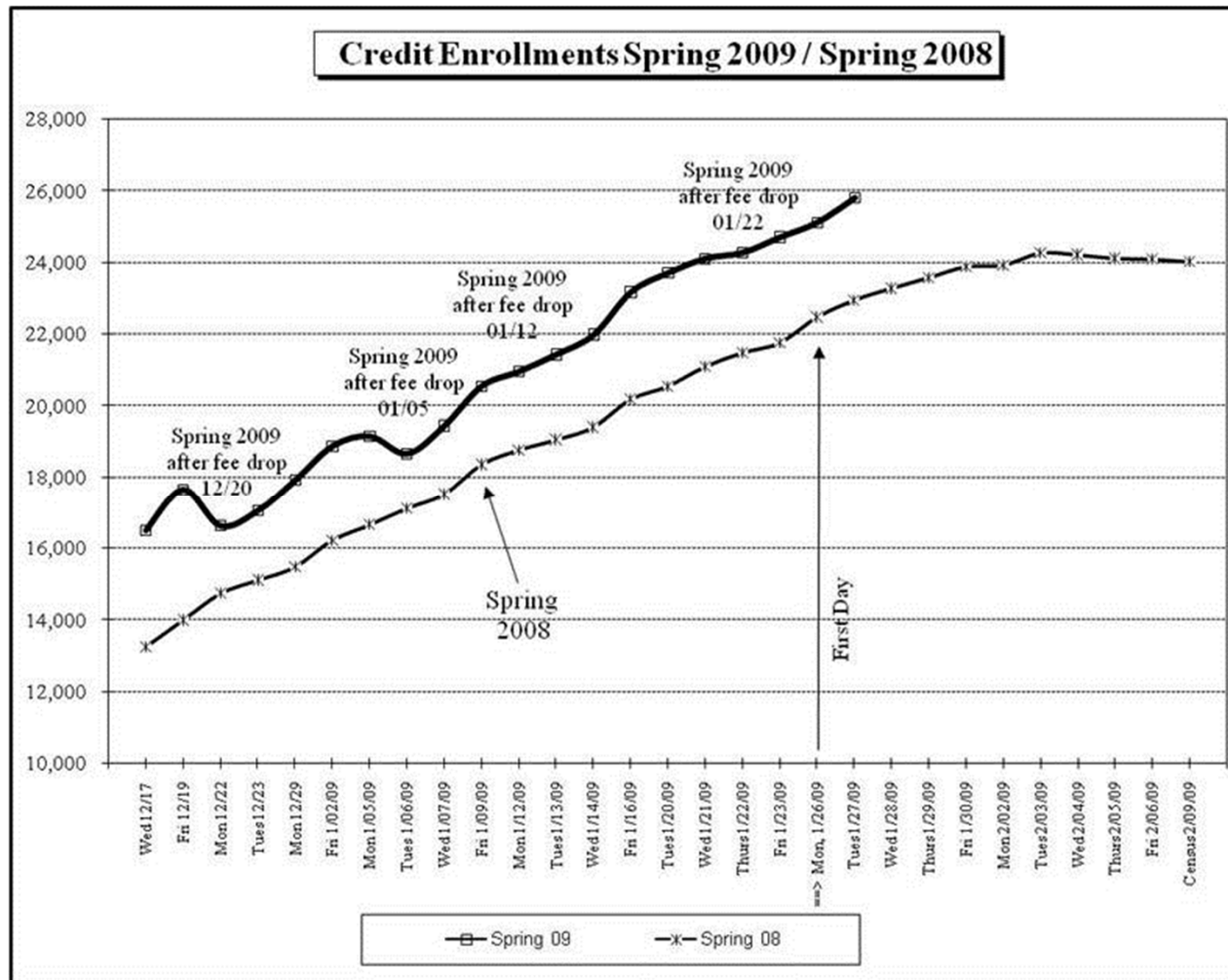
Rationale for Shorter Deadline

- **Large Amount of Student Receivables**
 - Failure to collect fees could result in a reduction of apportionment by up to 10% (Student Fee Handbook)
- **Inconsistent Course Enrollments**
 - Large dips in enrollment with longer fee payment deadline
- **Retroactive Drop Requests**
 - High percentage of student petitions requesting retroactive drop because they never paid and never attended.
- **Comparable with Neighboring Colleges**

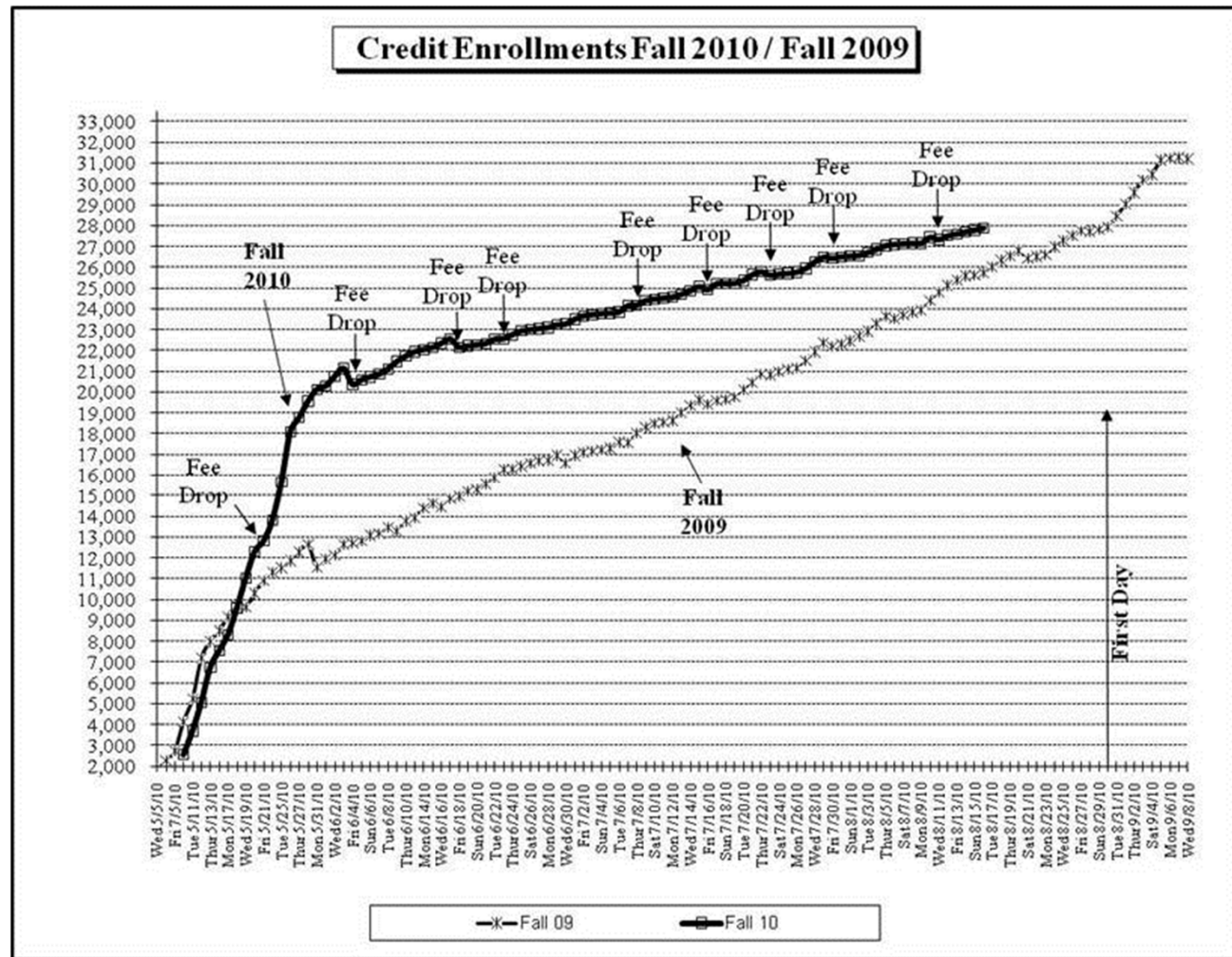
Student Receivables

Pre-10 day	10 days	5 days	3 days	% decrease from FA 07
FA 07	FA 08	FA 09	FA 10	
\$102,272	\$90,229	\$86,291	\$69,972	31.5%
SP 08	SP 09	SP 10	SP 11	
\$124,050	\$86,585	\$49,647	\$70,194	43.4%
\$224,322	\$176,811	\$135,928	\$140,166	37.5%
Four Year Receivables				
June 08	June 09	June 10	June 11	
\$984,756	\$726,036	\$785,731	\$387,745	60.6%

Course Enrollments – SP 09



Course Enrollments – FA 10



Course Enrollments – FA 11

Fee Drop	# of Courses	# of Students	Estimated Fees*
7/21/11	837	378	\$90,396
8/1/11	337	232	\$36,396
8/4/11	133	105	\$14,364
8/11/11	151	116	\$16,308
8/18/11	131	109	\$14,148

*assumes each course is 3 units

Neighboring Colleges

School	Headcount (FA 10)	Fee Deadline
Barstow	2,919	at registration
Chaffey	19,773	10 days (until Aug 5)
Copper Mountain	2,275	at registration
Crafton Hills	6,121	next business day
Imperial Valley	9,013	at registration
Moreno Valley	10,532	3 dates in August
Mt. San Jacinto	17,195	4 calendar days
Norco	10,119	3 dates in August
Palo Verde	3,863	next business day
Riverside City	19,915	3 dates in August
San Bernardino Valley	13,857	3 days
Victor Valley	13,094	5 days



Fee Payment Assistance

- FAFSA
- BOG Fee Waiver
- Payment Plan (implemented SP 09)
 - FA 10 = 435 participants
 - FA 11 = 340 (as of August 15, 2011)
- Scholarships
- Fee Deferrals
- Loans



Proposed Change for Spring '12

- “Students who are experiencing extreme circumstances preventing them from paying their fees on time should contact the COD Financial Aid Office for information about available fee payment assistance.”



Questions

College of the Desert
Five-year Budget Projections - FY2011/12 thru FY2015/16
version 1.2-State budget with mid-year cuts 08-1618-11

PLEASE NOTE: SUBJECT TO CHANGE

Approved Budget	FY2011/12	Budget Projections	FY2012/13	FY2013/14	FY2014/15	FY2015/16
Opening Fund Balance	\$8,383,183	Opening Fund Balance	\$6,457,834	\$3,905,200	\$552,566	-\$3,600,068
		Prior Year Revenues	\$38,309,886	\$38,519,218	\$38,519,218	\$38,519,218
		COLA	\$0	\$0	\$0	0
		Growth Revenue increase	\$0	\$0	\$0	0
		State Funding Cuts	\$0	\$0	\$0	0
		Tuition Revenue increase	\$209,332	\$0	\$0	0
		Other Revenues Increases	\$0	\$0	\$0	0
Total Revenues	\$38,036,851	Total Revenues	\$38,519,218	\$38,519,218	\$38,519,218	\$38,519,218
Expenditures	\$38,667,382	Prior Year Expenditures	\$40,022,733	\$41,071,852	\$41,871,852	\$42,671,852
		Projected Cost Drivers--see below for details	\$1,049,119	\$800,000	\$800,000	800,000
Transfers out of General Fund	\$1,294,818					
Total Expenditures	\$39,962,200	Total Expenditures	\$41,071,852	\$41,871,852	\$42,671,852	\$43,471,852
Excess of Revenues over Expenditures	-\$1,925,349	Excess of Revenues over Expenditures	-\$2,552,634	-\$3,352,634	-\$4,152,634	-\$4,952,634
Closing Fund Balance	\$6,457,834	Closing Fund Balance WITHOUT ANY ACTION PLAN	\$3,905,200	\$552,566	-\$3,600,068	-\$8,552,702
		Action Plans				
		Prior Year Action Plans	\$0	\$0	\$4,672,750	\$10,641,643
		Tentative Action Plans Already Identified including Prior Years' Required Action Plans	\$0	\$0	\$4,672,750	\$10,641,643
		New Required Action Plans each year to maintain Closing Fund Balance of at least 7.5% of Revenues (or can be termed Projected Budget Shortfall)	\$0	\$2,336,375	\$1,816,259	\$800,000
		Closing Fund Balance AFTER ACTION PLANS	\$3,905,200	\$2,888,941	\$2,888,941	\$2,888,941

College of the Desert
Five-year Budget Projections - FY2011/12 thru FY2015/16
version 1.2-State budget with mid-year cuts 08-1618-11

PLEASE NOTE: SUBJECT TO CHANGE

Approved Budget	FY2011/12	Budget Projections	FY2012/13	FY2013/14	FY2014/15	FY2015/16
		Projected Cost Drivers details				
		Steps	\$450,000	\$450,000	\$450,000	450000
			\$0	\$0	\$0	0
		Utilities increases	\$100,000	\$100,000	\$100,000	100000
		Academic Supplies	\$249,119	\$0	\$0	0
		Projected Programs and Services cost increases related to Growth funding increases	\$250,000	\$250,000	\$250,000	250000
		Total Cost Drivers	\$1,049,119	\$800,000	\$800,000	\$800,000